

Operation Manual

U2CI™ uDock™ , UltrameterII™ Series and PoolPro™ Interfaces



Order Accessory Package: U2CIP Package Includes:

uDock™ with USB Cable, U2CI Software CD and
Installation Guide for downloading data from your
Ultrameter II or POOLPRO

**MYRON L
COMPANY**

Water Quality Instrumentation
Accuracy • Reliability • Simplicity

BENEFITS AND FEATURES



Transfer Data stored in Ultrameter II™ and POOLPRO™ handheld instruments to U2CI application via IR port

Reduce Data logging time/errors

Share saved water sample data

Lose the clipboard and still easily comply with record-keeping requirements

PRODUCT HIGHLIGHTS

- Transfer data with accuracy, reliability and simplicity using the uDock's™ (Model U2CI) IR port
- Easy to install software from CD or http://myronl.com/main/U2CI_Application_DL.htm
- The uDock application will operate on Windows XP and Vista*; and Macintosh OS 10.0 - 10.4.11**. If you are running an older operating system, contact the Myron L Company.
- Automatic organization of data (record number, type of measurement, value and unit measurement, solution, temperature, date and time stamp)
- Exports to Office software (Word*, Excel*, Works*, etc.) using universal formatting (.csv) files
- Control your Ultrameter II™ and POOLPRO™ time and date setting through our uDock software
- Clear instrument memory through our uDock software
- Self powered by USB port (No batteries or external power supply needed)

For further information, please visit www.myronl.com or contact the Myron L Company (see back cover).

*™ Microsoft **™ Macintosh

LIMITED WARRANTY

All Myron L uDocks have a Two Year Limited Warranty. Warranty is limited to the repair or replacement of the uDock only, at our discretion. The Myron L Company assumes no other responsibility or liability.

MYRON L COMPANY

Water Quality Instrumentation
Accuracy • Reliability • Simplicity

... Since 1957



1) Place your clean & dry Ultrameter II **1** on top of the uDock, **2** lining up the IR ports on top of each other to create the information connection.

2) Plug the USB cable (connected to the uDock) into the USB port **3** on your computer.

TABLE OF CONTENTS

Illustration	i
System Requirements	1
I. Installation	2
A. Windows	2
1. U2CI Executable and Support Files Installation.....	2
2. Myron L uDock USB Serial Converter Installation.....	4
3. Myron L uDock USB Port Driver Installation	5
B. Mac OS X	7
1. U2CI Executable and Support Files Installation	7
2. Install the uDock device driver	9
II. Enabling Data Transfer	11
A. Connect uDock	11
B. Launch Software	11
C. Select Port Preference	12
D. Enable UMII/POOLPRO Communication	12
III. U2CI Menu Summary	14
A. File	14
1. Load	14
2. Clear Data.....	15
3. Save	16
4. Save As.....	16
5. Print.....	17
6. Quit	17
B. Edit	18
1. Preferences.....	18
2. Reference Info	19
C. UMII Commands.....	20
1. Download Data	20
2. Set Date and Time	22
3. Erase Memory.....	22
4. Disconnect	22
D. Help.....	23
1. U2CI Info.....	23
2. Myron L Company.....	23
IV. Other Features in U2CI	24
A. Application Window Options	24
B. Active Menus and Fields	24
C. Windows .mlc File Association	24
D. U2CI supports tooltips	25
V. Troubleshooting	26
VI. Notes	27
VII. Addendum	28

REQUIREMENTS

Computer running on Microsoft® Windows XP™, Windows Vista™ or Macintosh OS 10.0-10.4.11 operating systems. Be aware that Vista will not save your user settings.

We will release a version for Mac OS 10.5 in the near future, and it will be available for download from the Myron L Company website:
http://myronl.com/main/U2CI_Application_DL.htm

FOR USERS WITH OLDER OPERATING SYSTEMS: U2CI Rev 1.0 is available - Contact the Myron L Company.

WARNING: USERS THAT HAVE PREVIOUSLY INSTALLED REV 1.0 MUST UNINSTALL IT PRIOR TO INSTALLING U2CI REV 1.1.3.**

Before installing the new U2CI 1.1.3, Windows users must open the “Start” menu, select “Control Panel”, then select “Add or Remove Programs”. Scroll to “U2CI”; select it and click on “Remove”. No System Reboot is required.

Mac OSX users should select “Go” in the Finder menu bar, then select “Applications”, and then scroll down to the U2CI folder. Drag the folder to the trash.

****VERY IMPORTANT** — If you are unsure of how to uninstall and install programs on your machine, contact your IT Department or System Administrator for assistance.

VISTA USERS: After installing on a Vista machine, some users may need to right click the U2CI icon and select “Properties”, then select “Compatibility”, and then check the box under “Compatibility Mode” to run this program in Compatibility mode for Windows XP™ (Service Pack 2).

Installation and use of U2CI Rev 1.1.3 requires user acceptance of the End User License Agreement (EULA). A copy of the EULA is on the software CD and can be downloaded from the Myron L website:
http://myronl.com/main/U2CI_Application_DL.htm

EXAMPLE SCREENSHOTS ARE OF WINDOWS XP AND MAC OS 10.4.11 OPERATING SYSTEMS. THE APPEARANCE OF THE INSTALLATION DIALOG BOXES WILL VARY ACCORDING TO THE OPERATING SYSTEM YOU ARE ON.

Save all work and exit all applications prior to installation of this software.

I. U2CI Installation

A. U2CI Installation for Windows Users

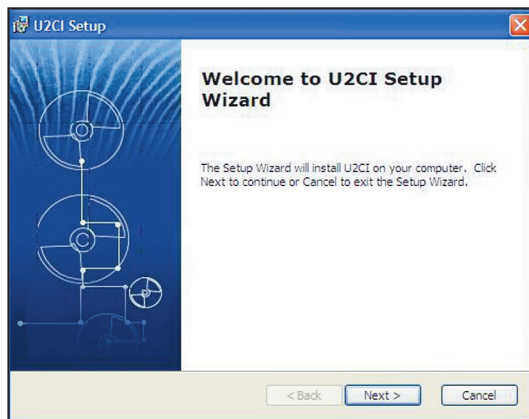
INSTALL U2CI SOFTWARE *BEFORE* CONNECTING THE uDOCK™ TO YOUR PC. (Review warning on page 1 before starting install.)

1. U2CI Executable and Support Files Installation.

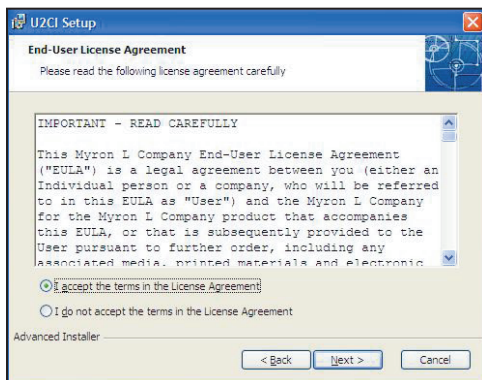
- a. Insert U2CI software CD into CD drive or download the U2CI Application & Documents software package for Windows from the Myron L website Download Center:
http://myronl.com/main/U2CI_Application_DL.htm.

If Auto Install does not start, go to Start\ My Computer\ U2CI and double click on the U2CI icon under Devices with Removable Storage. Or you can right click the U2CI icon, select “Open” and double click on U2CI.MSI.

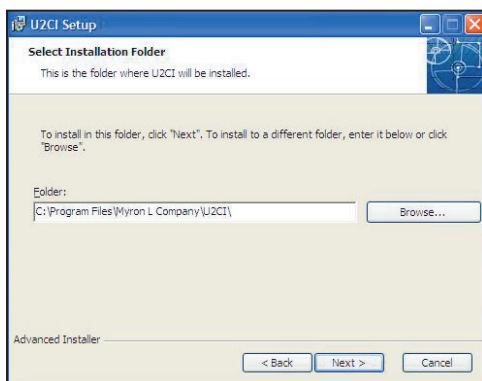
- b. Click “Next” in the U2CI Setup Wizard Welcome dialog box to begin U2CI software installation.



- c. Read the EULA. If you do not agree to the terms of the EULA, click “Cancel” and exit the installation. If you agree to the EULA, check the “I accept the terms in the license agreement” box. Then click “Next”.



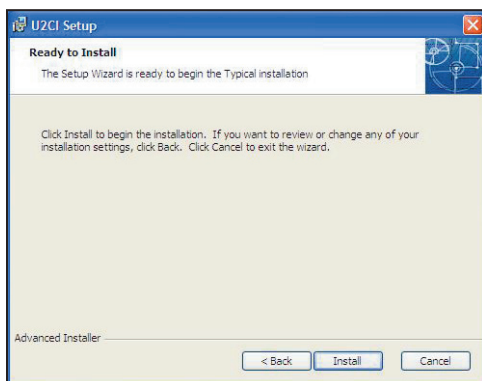
- d. Choose the location you want to install the U2CI to. The default location appears in the “Folder” field: C:\Program Files\Myron L Company\U2CI\



If you want to choose your own location and you know the filepath, type it in the “Folder” field. You can also click “Browse” to select a filepath from a drop-down list; click “OK” to confirm the location in the Browse dialog box.

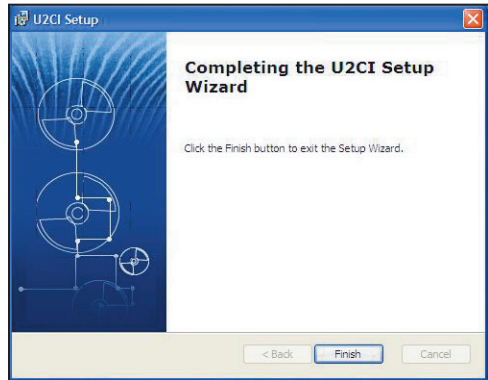
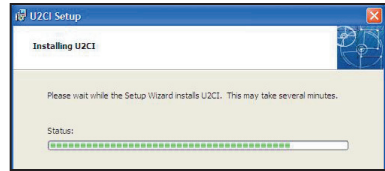
Click “Next” to accept the destination directory that appears in the “Folder” field.

- e. Click “Install” in the “Ready to Install” dialog box.



A status bar will display indicating the installation progress.

- f. Click “Finish” in the “Completing the U2CI Setup Wizard” dialog box when installation is complete.



2. Myron L uDock USB Serial Converter Installation.

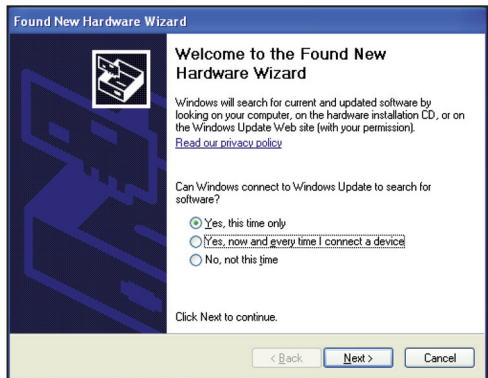
- a. Insert uDock USB connection cable into any USB port on your computer.

The Found New Hardware Wizard will prompt you to search for the USB Serial Converter (if it isn't already installed on your machine).

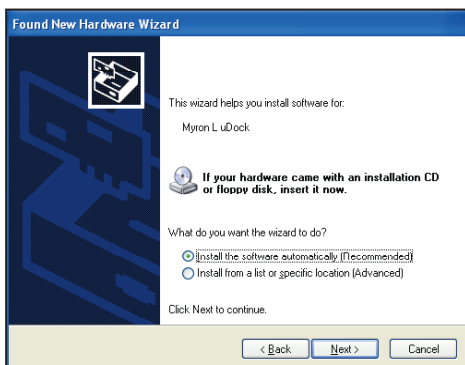
NOTE: IF YOU HAVE PREVIOUSLY

INSTALLED ANY VERSION OF THE U2CI SOFTWARE ON YOUR SYSTEM, YOU MAY NOT HAVE TO INSTALL THE DRIVERS.

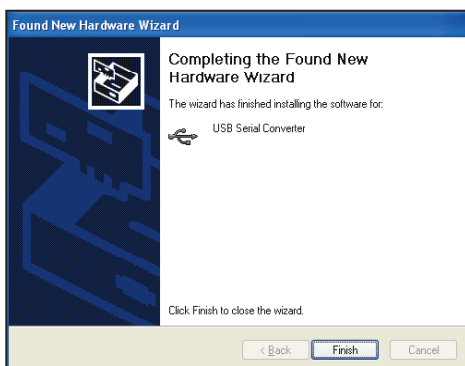
IF YOU DON'T GET THE FOUND NEW HARDWARE WIZARD PROMPT, SKIP TO “II. ENABLING DATA TRANSFER”, PAGE 10.



- b. In the Found New Hardware Wizard window, select “Install the software automatically (Recommended)”.
- The Found New Hardware Wizard will search for the proper driver.** It will find “USB Serial Converter”.

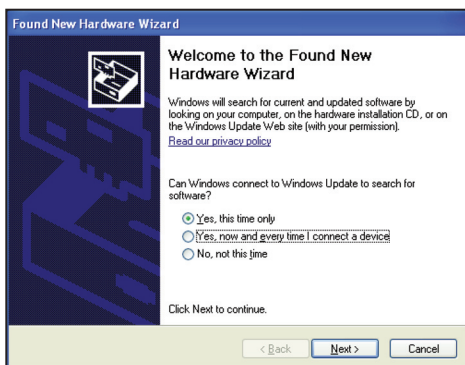


- c. Click “Finish” to complete installation of the USB Serial Converter.



3. Myron L uDock USB Port Driver Installation.

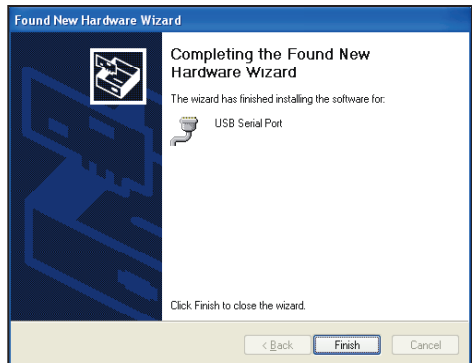
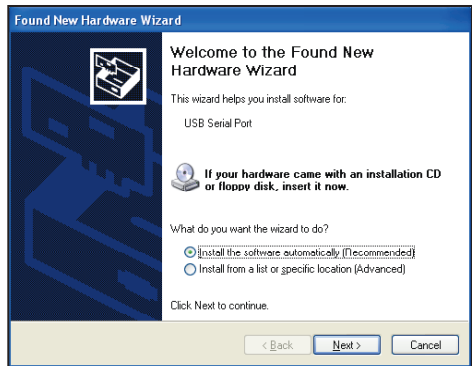
- a. The Found New Hardware Wizard will prompt you to search for the USB Serial Port driver. Choose “Install the software automatically (Recommended)”.



The Found New Hardware Wizard will search for the proper driver.** It will find “USB Serial Port”.

- b. Click “Finish” to complete installation of USB Port Driver. (Your operating system may require a restart.) Your new hardware is ready to use.

NOTE: If no internet connection is available, you may install the driver from the CD. To do this, select “Install from a list or specific location” and click “Next”. Select “Search for the best driver in these locations”. Check the “Search removable media” box. Click “Next”.



*** Administrator rights may be required to install the drivers on your computer.*

B. U2CI Installation for Macintosh OS X Users

NOTE: STUFFIT EXPANDER may be required. If you do not have it, you can download it for free from the web:
<http://my.smithmicro.com/mac/stuffitexpander/download.html>

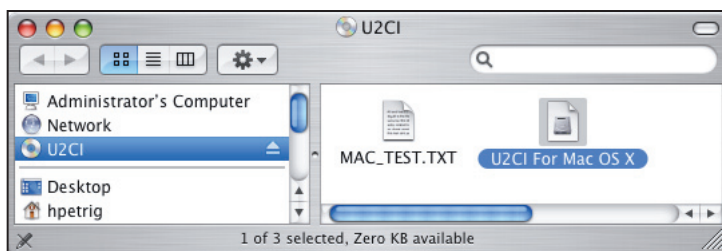
INSTALL U2CI SOFTWARE AND uDOCK™ DEVICE DRIVER BEFORE CONNECTING THE uDOCK™ TO YOUR MAC. (Review warning on page 1 before starting install.)

1. U2CI Executable and Support Files Installation.

- a. Insert U2CI software CD into CD drive or download the U2CI Application & Documents software package for Macintosh OS X from the Myron L website Download Center:

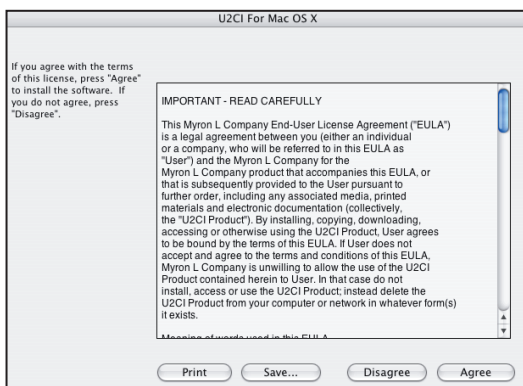
http://myronl.com/main/U2CI_Application_DL.htm

- b. Double-click on the U2CI CD icon then double-click the U2CI For Mac OS X executable icon on the U2CI CD.



- c. Click "Agree" on the EULA dialog box.

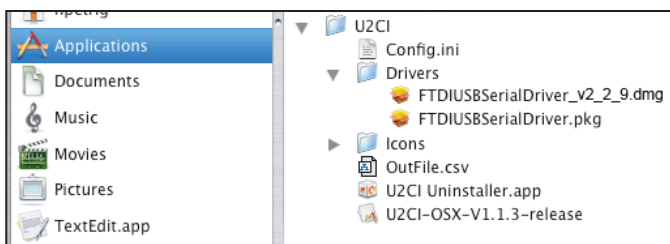
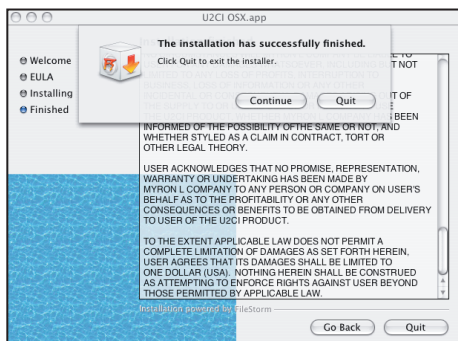
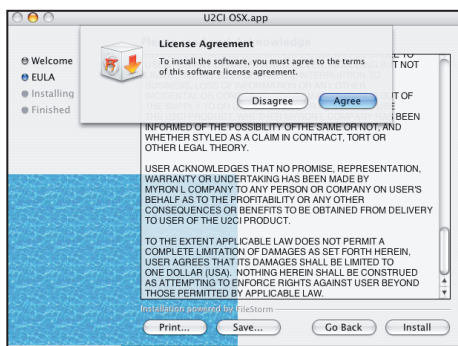
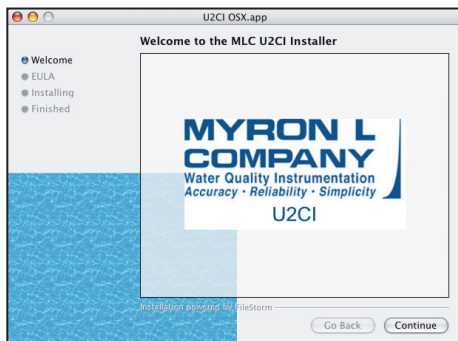
- d. Double-click the U2CI OSX.app icon.



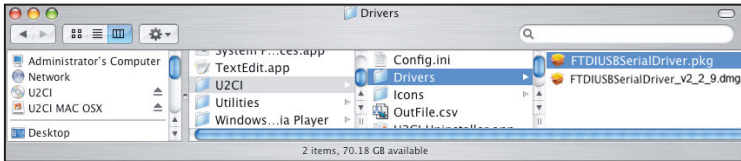
- e. Click “Continue” on the “Welcome to the Mac U2CI Installer” screen.
- f. Read the EULA. If you do not agree to the EULA, you cannot install the software. Click “Print” or “Save” to print or save a copy of the EULA for your records.
- g. Click “Install” on the EULA screen.
- h. Then click “Agree” in the License Agreement dialog box to continue.
- i. Click “Quit” to complete software installation process.

Close the U2CI Mac OSX window.

The software and drivers have been copied to a U2CI folder under Applications.



2. **Install the uDock device driver.** Click the Apple icon in the very left of the Finder menu bar. Select “About This Mac” and note whether your computer has a G-series or Intel processor. Click “Go” in the Finder menu bar and then “Applications”. Scroll down to the “U2CI” folder and open. Select the “Drivers” folder and open.

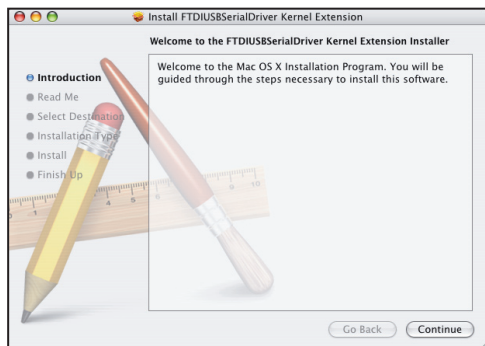


- a. If your computer is running on an Intel processor, double-click on the file “FTDIUSBSerialDriver_v2_2_9.dmg”. If your computer is running on a G-series processor (G3, G4, or G5), double-click on the file “FTDIUSBSerialDriver.pkg”.

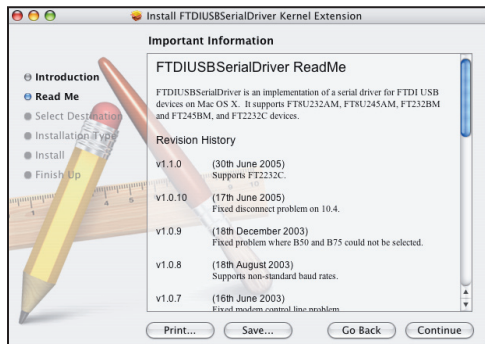
The driver installation software will launch.

“Install FTDIUSBSerialDriver Kernel Extension” dialog box will then display.

- b. Click “Continue” on the Introduction screen to install the FTDIUSB SerialDriver Kernal Extension.



- c. Click “Print” or “Save” on the ReadMe screen to keep a copy of important information regarding the serial driver in a more accessible location, if desired. Click “Continue” to proceed with the driver installation process.

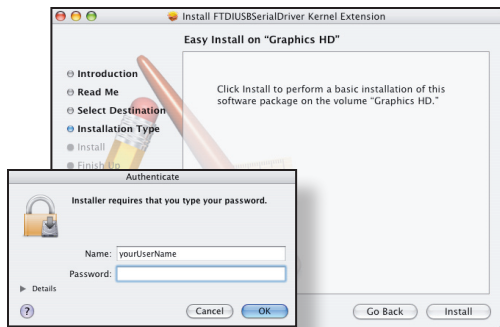


- d. On the “Select Destination” screen, select your hard drive as the destination volume. Click “Continue”.



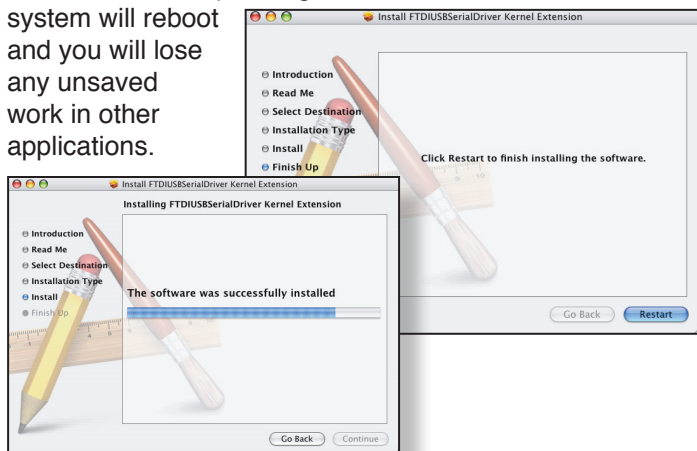
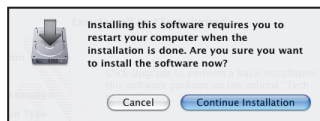
- e. Click “Install”. A prompt will appear for your system password.

- f. Type in your password and click “OK” to proceed with the USB driver installation on your hard drive.



You must have Administrator rights to install the drivers on your computer.

- g. Click “Continue Installation”.
- h. Click “Restart” to finish the USB driver installation on your hard drive. Your operating system will reboot and you will lose any unsaved work in other applications.



II. Enabling Data Transfer

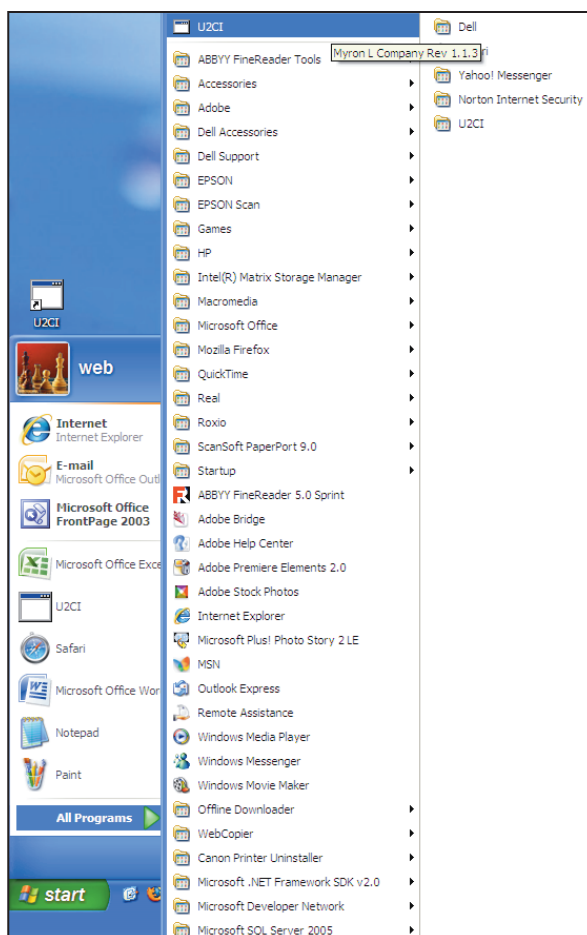
NOTE: YOU MUST CONNECT THE uDOCK PRIOR TO LAUNCHING THE U2CI SOFTWARE SO THE SOFTWARE RECOGNIZES THE COM PORT.

A. Connect the uDock to any USB port on your computer.

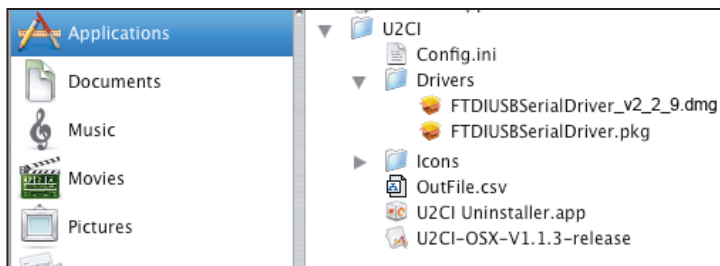
B. Launch the U2CI Software.

If you are on Windows XP and chose the default settings in Step I.A.g, a shortcut to the U2CI application is on the desktop and another is pinned to the Start menu. The application can be found under Start, All Programs, U2CI.

Double-click on the U2CI icon on the desktop, in the Start menu or under Start\All Programs\U2CI.



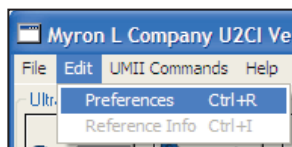
If you are on Mac OSX, select Go from the Finder menu bar. Click on Applications. Scroll down to the U2CI folder. Open the folder and double-click on “U2CI-OSX-V1.1.3-release”.



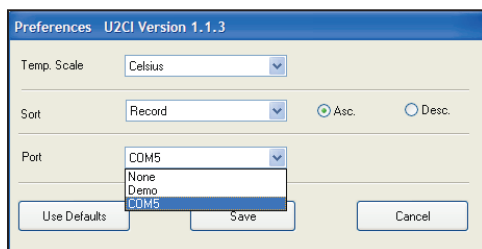
Drag the U2CI-OSX-V1.1.3-release icon to the system dock to create a shortcut on the dock or right-click on the file and select “Make an Alias” to create a shortcut on the desktop.

C. Select Port preference.

1. Open the Edit drop-down menu and select “Preferences”.
2. In the Port section of your Preferences window, select the **highest available port**.



If only None and Demo appear, close the application, then re-open it. Then go to Edit, select Preferences, and then select the highest available port.




3. Click “Save”.

NOTE: Vista users must edit Port Preferences EVERY time the U2CI program starts.

D. Enable Ultrameter II/POOLPRO communication.

1. Set the Ultrameter II/POOLPRO on the uDock.
2. Press **COND** to power up the Ultrameter II/POOLPRO.

3. “PC On” mode

- a. Press  and hold until “PC OFF” is displayed.



- b. Then press .


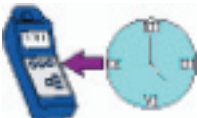




The display may briefly indicate “PC Ini”.

- c. Then “PC On” will display.



You may NOW use the icon buttons or the “UMII Commands” drop down menu to send commands to your ULTRAMETER II/ POOLPRO. (See Section III.C. UMII (and POOLPRO) Commands.)

Icon	Command
	Download Data
	Set Date and Time
	Erase Memory
	Disconnect

III: U2CI Menu Summary

NOTE: FUNCTIONALITY IS THE SAME FOR WINDOWS AND MAC OPERATING SYSTEMS. SCREENSHOTS ARE OF WINDOWS XP™.

THE U2CI MAIN MENU INCLUDES THE FOLLOWING DROP-DOWN MENUS: FILE, EDIT, UMII COMMANDS AND HELP. THIS PART DESCRIBES EACH MENU AND ITS SUBMENUS' FUNCTIONS IN DETAIL.

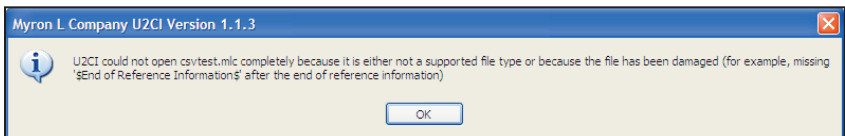
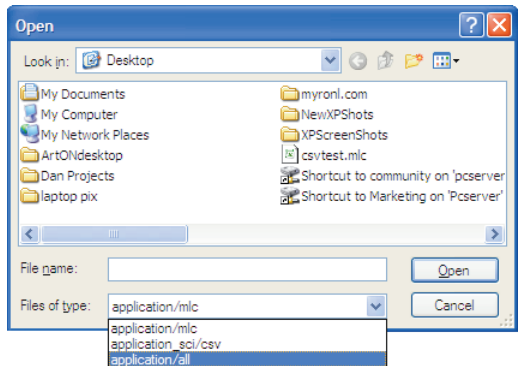
A. File

1. Load (Ctrl / ⌘ + L)

This will “load” a data file in the main window screen. If the user chooses this submenu, the standard open file dialog will be displayed.

The file types supported by the U2CI are .mlc and .csv formats. If the user chooses the “Open” button, the corresponding data file will be loaded into the U2CI main window. If the user chooses the “Cancel” button, the open dialog will be closed and no file will be loaded.

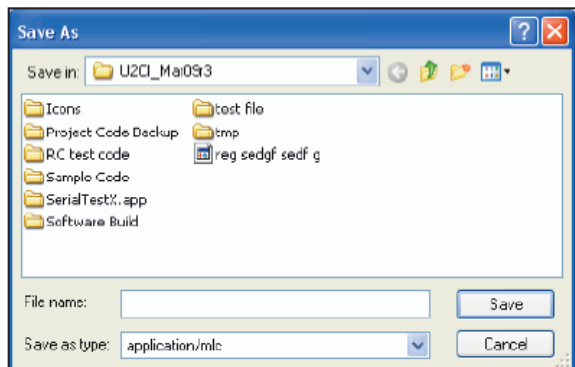
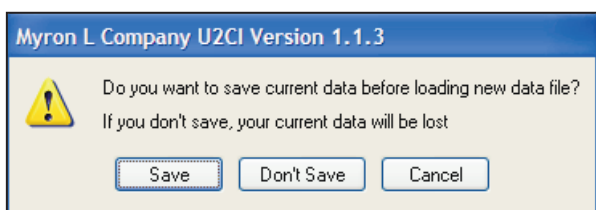
If a loading error occurs (for example, wrong data file type or damaged data file), the U2CI will display the following warning message.



After loading the data file, the corresponding filename will be displayed on the right-top corner above the reference information field, and the reference information (if there is any) will be displayed in the reference information field.

If the user chooses to load a data file and the current data has not been saved, the U2CI will display a warning message.

If the user chooses the “Save” button, then the standard “Save As” dialog box will be displayed. **This is the same as the “Save” dialog box on Mac OSX.**



If the user chooses the “Don't Save” button, the

current data will not be saved and the standard open file dialog will be displayed. The selected file will replace the current data in the U2CI main window screen.

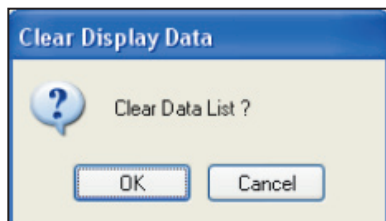
If the user chooses the “Cancel” button, the loading operation will not be executed and the current data will not be changed.

2. Clear Data (Ctrl / ⌘ + D)

This will clear the current data in the main window screen as well as its reference information and file name. When there is no data on the screen, this submenu will be grayed out.

If the user selects “Clear Data”, a message will be displayed asking you to confirm your decision.

If the user chooses the “OK” button, the U2CI will check if the current data is saved or not. If it is not saved, the U2CI will prompt the user to save the data before clearing it.



3. Save (Ctrl / ⌘ + S)

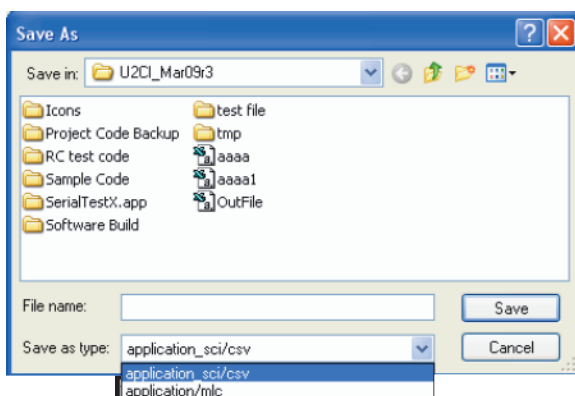
On the File menu, click “Save”. This will save the data in .mlc format, i.e., the truncated data that is displayed in the U2CI main window screen and on the ULTRAMETER II display.

MLC data format is used by the Myron L Company’s U2CI application software. Saving your data in a .mlc format enables you to load the data file back into the U2CI software at a later date.

4. Save As

On the File menu, click “Save As”.

In Windows a dialog box will provide you with a choice to save the data in either .mlc format or in .csv



format. If the .csv format is chosen, then the data will be saved as the scientific data format without truncating any data. CSV (comma separated values) data format can be read by many spreadsheet programs, e.g., Microsoft Excel™. **In Mac OSX this function is the same as “Save”.**

Important Information about Data Format for Spreadsheet Applications

NOTE: When importing your .csv formatted data into Microsoft Excel™, the reading values will default to a scientific format. To view in “Number” format, you must:

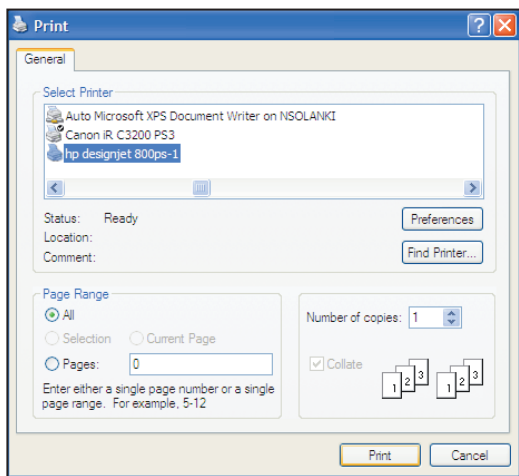
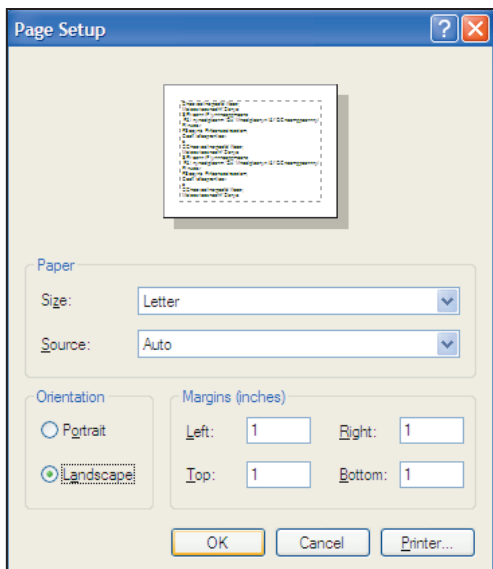
- Select the cells containing the reading values.
- Click on the Format pull-down menu.
- Select “Cells”.
- Under the Number tab, select “Number” from the “Category:” populated list.
- Click “OK”.

5. Print (Ctrl / ⌘ + P)

This submenu will be active only when there is data displayed in the main window screen. When the user chooses to print the data, a standard Page Setup dialog will be displayed.

The user can set up the page according to his or her needs. We recommend using the landscape orientation. Then click the “OK” button.

A standard Print dialog will be displayed. If the user chooses “Print”, the corresponding data list as well as the reference information and the file name will be printed out.



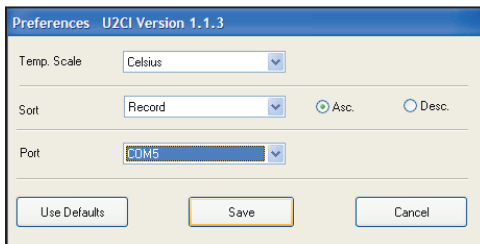
6. Quit (Ctrl / ⌘ + Q)

This will quit the U2CI application, the same as closing the U2CI main window. If there is any unsaved data in the main window screen, the user will be prompted to save the data.

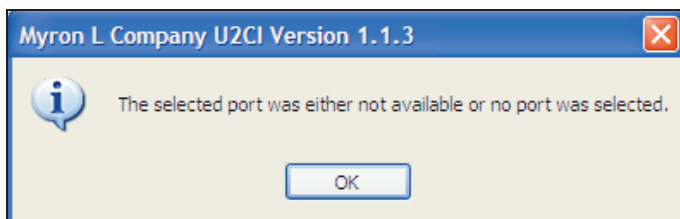
B. Edit

1. Preferences (Ctrl / ⌘ + R)

When the user chooses this submenu, the preference window will be displayed:



- a. “Temp Scale” – Choose whether you want to display the temperature in Celsius or Fahrenheit.
- b. “Sort” – Choose how you want to arrange and display the data. You can choose to sort by “Record”, “Date”, “Time”, “Measurement”, “Solution”, “Temperature”, “Value”, or “Unit”.
“Asc” or “Desc” – Choose whether you want to arrange the data in ascending order or in descending order. For example: You can choose to sort the data by “Date” in descending order and the data will be displayed by date with the most recent date at the top.
- c. “Port” indicates which serial port you want the uDock to communicate with. All available ports on the computer will be found and displayed dynamically. If the user chooses “None” in the preference window, the U2CI will display the following message:



Windows XP™ Tip: You can open Start\Control Panel\System\Hardware\Device Manager in Windows XP to see which ports are open. Choose “Ports (COM & LPT)” and see what COM number is connected to your uDock (USB Serial Port (COM” “)). Then choose the corresponding COM number in the U2CI preference window.

The U2CI also provides a “Demo” mode in the port list to demonstrate how the U2CI works when the uDock is not connected.

There are three buttons on the preference window in the U2CI, which are: Use Defaults, Save and Cancel.

- d. The “Use Defaults” button will re-set the preferences to the original values during installation.
- e. The “Save” button will save the preference information that the user has selected and apply the current preference information to the data on screen.

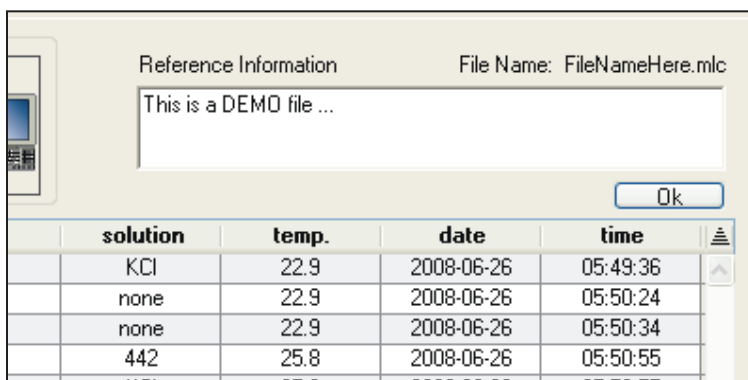
VISTA USERS: U2CI will NOT save your user preferences.

- f. The “Cancel” button will cancel the operation. If this button is selected, the preference window will disappear, and the current display will not be changed.

2. Reference Info (Ctrl / + I)

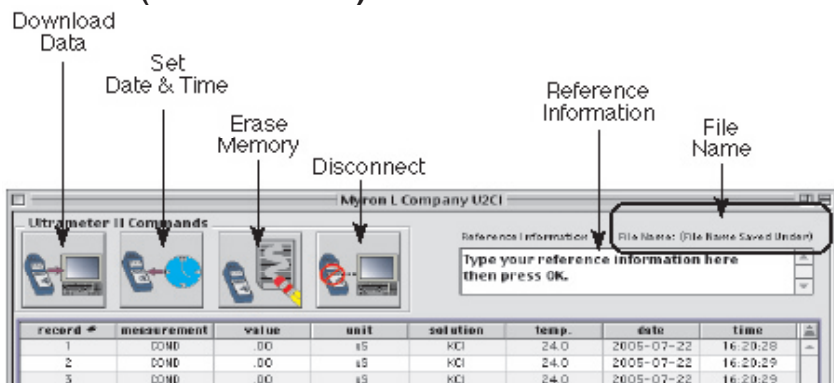
When there is no data displayed in the main window screen, both the Reference Info submenu and the Reference Information field will be grayed out. They are activated only when there is data displayed on the screen. The user can then edit and modify the corresponding reference information.

When the user chooses the Reference Info submenu, the “OK” button will be visible under the reference information field. After editing the reference information, you must click “OK” to save any edits and exit the field. The maximum number of characters allowed in the reference information field is 100.



	solution	temp.	date	time	
	KCl	22.9	2008-06-26	05:49:36	
	none	22.9	2008-06-26	05:50:24	
	none	22.9	2008-06-26	05:50:34	
	442	25.8	2008-06-26	05:50:55	
	KCl	25.8	2008-06-26	05:50:57	

C. UMII (and POOLPRO) Commands



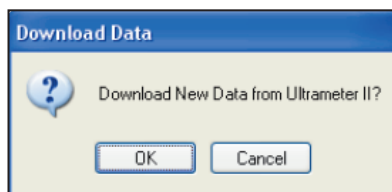
UMII Commands: You may use the icon buttons (shown above) or the UMII Commands drop down menu to send commands to your Ultrameter II/POOLPRO.

1. Download Data

Click the Download Data icon or select “Download Data” from the UMII Commands drop-down menu to download data from the ULTRAMETER II/POOLPRO to your computer.

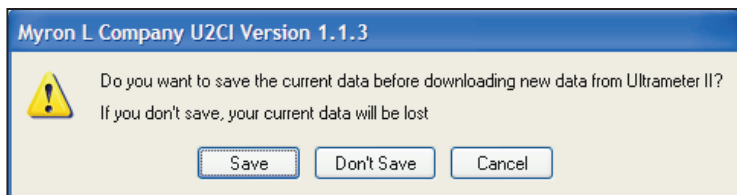
The U2CI will display a message box.

Click “OK”.



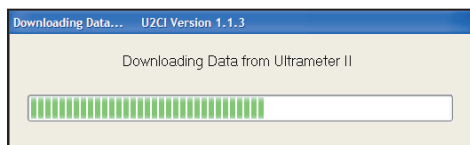
NOTE: The Ultrameter II/ POOLPRO will shut itself off automatically after 60 seconds. If it has powered down before you download new data, a prompt will tell you to check the uDock connection and ensure that the Ultrameter II/ POOLPRO is in “PC On” mode. (See “II.D.Enable Ultrameter II/ POOLPRO Communication”, pages 11-12.)

If you have previously downloaded data in the same session, a prompt will appear asking whether or not you want to save the current data before downloading new data. Click “Save”.

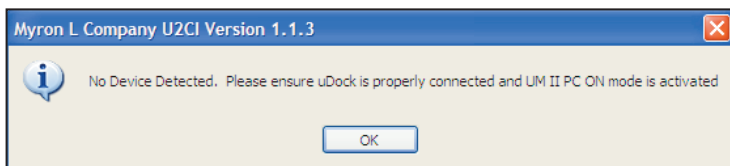


If the uDock is properly connected and the ULTRAMETER II is in “PC On” mode, the U2CI will begin to download data from the ULTRAMETER II/POOLPRO.

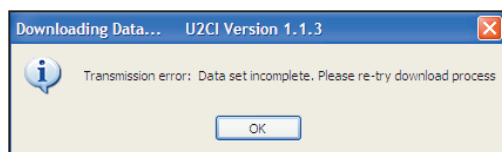
The download progress bar will appear while downloading.



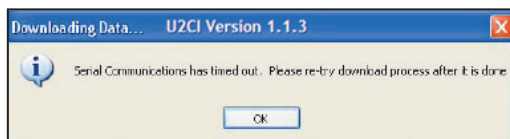
If your uDock is not properly connected or your UMII is not in “PC On” mode, the U2CI will display a warning message.



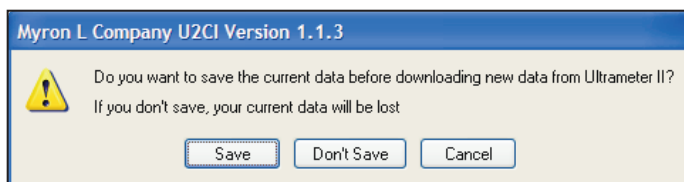
In the event that the transmission is interrupted or the data set is not completed within the timeout period, e.g., the ULTRAMETER II/POOLPRO is accidentally removed from the uDock during transmission, the U2CI will display a message to inform you that there was a problem with the download and to try again.



If there is a problem and the download process cannot be started within the timeout period, the U2CI will display a message indicating there is a timeout error. In this case, put your UMII back into “PC On” mode and try again.

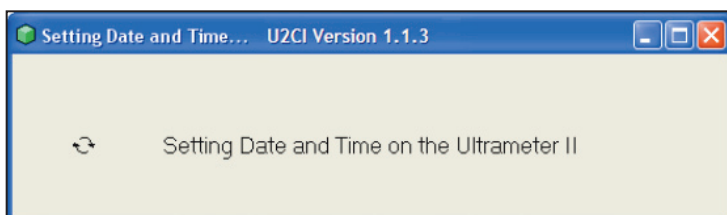


The U2CI will also protect the unsaved data in the main window screen by displaying a warning message when the user tries to download new data from the ULTRAMETER II/POOLPRO.



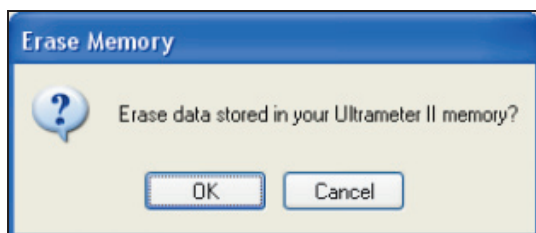
2. Set Date and Time

This will set the date and time on your ULTRAMETER II. If the uDock is properly connected and the ULTRAMETER II is in “PC on” mode, the Date and Time status bar will be displayed. Please note: The date and time is taken directly from your computer. To ensure accuracy, verify that your computer’s Date and Time are correct.



3. Erase Memory

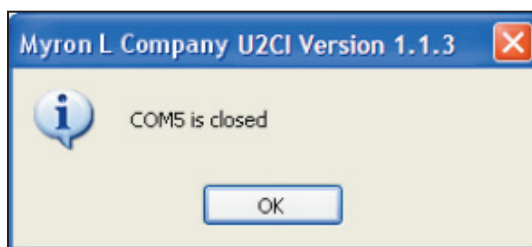
This will erase the data stored in your Ultrameter II/ POOLPRO memory. If the uDock is properly connected and the Ultrameter II is in “PC On” mode, a dialog box will prompt you to confirm your decision to erase data stored in the unit’s memory.



4. Disconnect

This will close the communication port between the U2CI and the UltrameterII. We recommend that you disconnect after each session to ensure that the com port is closed.

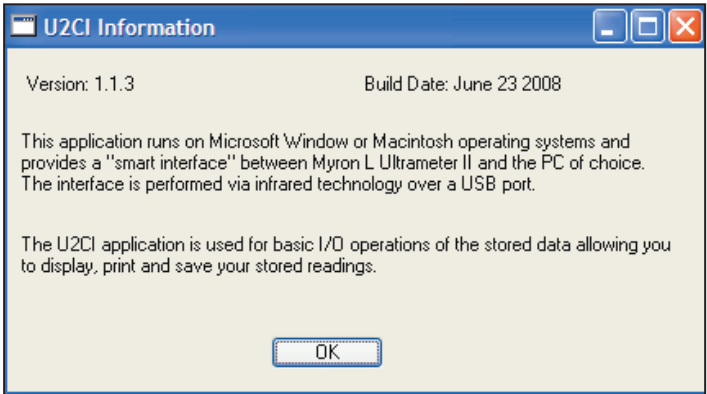
A message will display indicating the corresponding communication port that will be closed.



D. Help

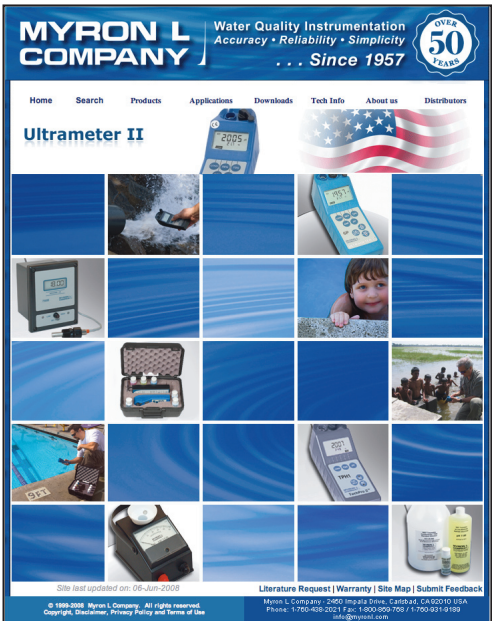
1. U2CI Info

When the user chooses this submenu, the version, build date, etc., will be displayed in the U2CI Information dialog box.



2. Myron L Company

When this submenu is clicked, it will link the user to the Myron L Company website (if an Internet connection is available): <http://www.myronl.com/>



IV. Other Features in U2CI

A. Application Window Options

The U2CI main window can be minimized, maximized or resized according to the user's needs.

B. Active Menus and Fields

When no data is loaded in the U2CI application window, the following menus and fields will be grayed out:

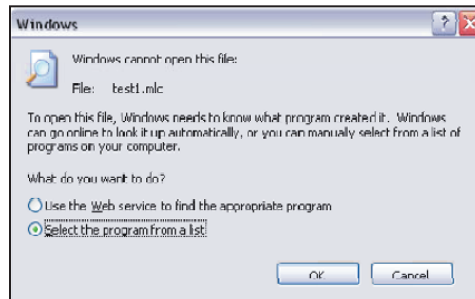
- Clear Data
- Save
- Save As
- Print
- Reference Information

They will be activated only when there is data displayed in the main window screen.

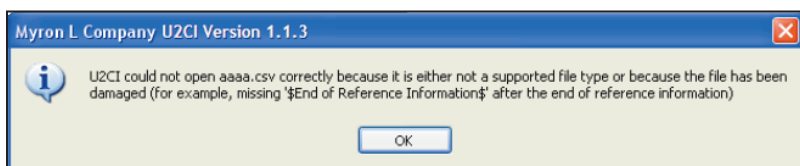
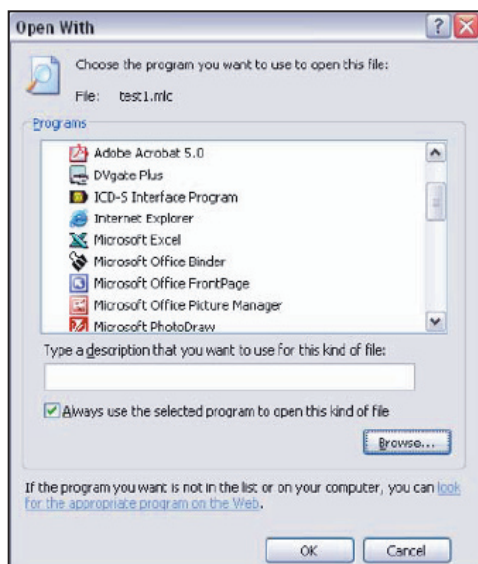
C. Windows .mlc File Association

The U2CI supported data file (.mlc) format can be opened by the U2CI automatically. To have the U2CI open the .mlc file, you must first associate the .mlc file with the U2CI program. To do this, double-click the .mlc file.

A dialog box will prompt you to locate the program that created the file. Select "Select the program from a list" and click "OK".



In the next window that will be displayed, check “Always use the selected program to open this kind of file. Then click “Browse...” Select the U2CI program and click “Open”. If you chose the default location for the software during installation, it is in C:\Program Files\Myron L Company\U2CI\U2CI-WIN-v1.1.3-release.exe.



If the user tries to open a non-supported data file or a damaged data file with the U2CI, then the U2CI application will give a warning message.

D. U2CI supports tooltips

When you move the mouse over a UMII command icon or the Reference Information field, a tooltip with descriptive text will display.

V. Troubleshooting

Symptom	Solution
No Device Detected	1. Verify your preference setting is set to the correct port. 2. Verify the UMII is in "PC On" mode.
Transmission error	The transmission was either interrupted or the data was not downloaded within the specified timeout period. Verify the UMII is in "PC On" mode and download again.
Serial Communications has timed out	The uDock had a problem and the download process did not start within the timeout period. Verify the UMII is in "PC On" mode and download again.
Demo and None are the only com port options in the "Port" preferences drop-down box	Make sure the uDock is securely plugged into a USB port. Close the U2CI application then re-open it. If you still don't get a com port option, contact your IT Department or System Administrator to verify that there is an available port to use.

VI. Notes

VII. Addendum

**Myron L COMPANY
2450 Impala Drive
Carlsbad, CA 92010-7226
USA
Tel: +1-760-438-2021
Fax: +1-800-869-7668 / +1-760-931-9189**

**E-Mail: info@myronl.com
techquestions@myronl.com**

www.myronl.com

Made In USA