

GUARDIAN²™ SOFTWARE APPLICATION

Version 1.0.0 for macOS®

OPERATION MANUAL

**For bluDock™ Enabled
Digital Handhelds**

Wireless Data Transfer



**MYRON L[®]
COMPANY**
Water Quality Instrumentation
Accuracy • Reliability • Simplicity

TABLE OF CONTENTS

1. Benefits and Features	3
1.1 General Description	3
1.2 Guardian ² Application Product Highlights	3
2. General Information.....	3
2.1 Limited Warranty	3
2.2 System Requirements	3
2.3 Guardian ² Operation Manual	3
3. Start Up	4
3.1 Launching the Guardian ² Application.....	4
3.2 Quitting the Guardian ² Application	4
4. Guardian² Menus and Commands	4
4.1 Summary and Work Area Layout.....	4
4.2 Tool Panel.....	5
4.3 Application Menu Bar and Commands	6
4.4 Guardian ² Menus, Controls, and Shortcuts.....	7
4.5 Data Window Command Ribbon	8
4.6 File Control Menu.....	9
5. Guardian² Data Window	9
5.1 Data Window Layout	10
5.2 Data Tab – Column Definitions.....	10
6. Pairing to and UnPairing from an Instrument.....	11
6.1 General Information	11
6.2 Turning On the Myron L [®] Company Instrument's PC Mode	11
6.3 Pairing to a Myron L [®] Company Instrument.....	12
6.4 Un-Pairing an Instrument	15
7. Guardian² Instrument Functions.....	16
7.1 General Notes on Instrument Functions	16
7.2 Selecting Available Devices	17
7.3 Downloading Data.....	18
7.4 Appending New Data to an Existing Data Window / File.....	19
7.5 Assigning a Name to an Instrument.....	19
7.6 Setting the Instrument's Date and Time.....	20
7.7 Erasing Measurement Data from an Instrument	21
8. Guardian² Features.....	21
8.1 Loading a Saved .mlcx File	21
8.2 Saving Data in Encrypted .mlcx Format.....	22
8.3 Close the Window or Quit the Application.....	22
8.4 Exporting Data in an Open Format (Save As).....	23
8.5 Printing and Print Preview	24
8.6 Adding Reference Information.....	25
8.7 Sorting Data.....	26
8.8 Preferences.....	28
9. Toubleshoot	29
9.1 Error Messages.....	29
9.2 Additional Troubleshooting Tips	31

1. BENEFITS AND FEATURES

1.1 GENERAL DESCRIPTION

The Myron L[®] Company Guardian² application allows you to transfer data via Bluetooth[®] wireless technology to the following Myron L[®] Company bluDock[™] enabled instruments:

- Ultrameter II[™]
- Ultrameter III[™]
- POOLPRO[™]
- DIGITAL DIALYSATE METER[™]

1.2 GUARDIAN² APPLICATION PRODUCT HIGHLIGHTS

Guardian² version X.X.X for Apple[®] will run on macOS[®] 10.13 or later and allows you to:

- Use the Light Mode for macOS 10.14 or later.
- Transfer data wirelessly with accuracy, reliability and simplicity.
- Save data files in a secure, encrypted format (.mlcx).
- Export data files in the following open formats: .csv, .xls, .xlsx and .pdf (without Optical Character Recognition).
- Associate all data from a particular instrument by assigning each instrument a unique name.
- Sort data by up to three, nested sort keys.
- Append new measurements to saved .mlcx-formatted files.
- Set the instrument time and date from your computer.
- Clear measurements stored in the instrument's memory.
- Includes a Demo data file to allow the user to experiment with the software without a connected and active instrument.

NOTE: For further information, please contact the Myron L[®] Company.

2. GENERAL INFORMATION

2.1 LIMITED WARRANTY

All Myron L[®] Company bluDock accessories have a Two-Year Limited Warranty. Warranty is limited to the repair or replacement of the bluDock only, at our discretion. The Myron L[®] Company assumes no other responsibility or liability.

2.2 SYSTEM REQUIREMENTS

- Operating System: Apple macOS 10.13 or later.
- Bluetooth wireless technology (Built-in or USB Dongle) (Bluetooth wireless technology 2.0)
- Disk Space: 45 MB of free disk space.
- Adobe Reader[®] (required for viewing the onboard Operation Manual).

2.3 GUARDIAN² OPERATION MANUAL

- The Guardian² Operational Manual is optimized for macOS 10.13.
- Click Guardian² HELP under the HELP menu to open a .pdf file of the Guardian² Operation Manual for your software revision.

NOTE: This manual may have been updated since the release of this version of the Guardian² application.

The most up to date version of this manual can always be found on the Myron L[®] Company website at:

www.myronl.com

*The Bluetooth[®] word mark and logos are registered trademarks owned by the Bluetooth SIG, Inc. and any use of such marks by Myron L[®] Company is under license.
macOS[®] is a registered trademark of Apple, Inc.*

3. START UP

3.1 LAUNCHING THE GUARDIAN² APPLICATION

The Guardian² application can be started several ways.

- By double clicking the application Icon in the Guardian² application folder.
- By clicking on a Guardian² shortcut (if you created one) on macOS desktop.
- By clicking on the Guardian² icon in the macOS Dock.
- By double-clicking on any .mlcx formatted file located on your computer.

Splash Screen:

- A splash screen will be displayed on the desktop screen every time the Guardian² application is launched. (Figure 1)



Figure 1

3.2 QUITTING THE GUARDIAN² APPLICATION

To quit the Guardian² application:

- Type ⌘ + Q
- Choose QUIT Guardian² from the Guardian² drop down menu.

4. GUARDIAN² MENUS AND COMMANDS

4.1 SUMMARY AND WORK AREA LAYOUT

The Guardian² application work area (Figure 2 and Figure 11) includes:

- Tool Panel and;
- Data Window. A separate window will open for each saved file. Each Window will include:
 - Menu (Figure 10)
 - The Command Ribbon (Figure 9)
 - A Reference Info Field (Figure 11)
 - A Footer (Figure 11)

4.2 TOOL PANEL

The Guardian² Tool Panel contains dedicated buttons for activating various functions and features. The Panel may be displayed Vertically (Figure 2) or Horizontally (Default) (Figure 3).

The following brief descriptions give a general sense of each button's function. More detailed information can be found in Sections 7 and 8 of this manual.

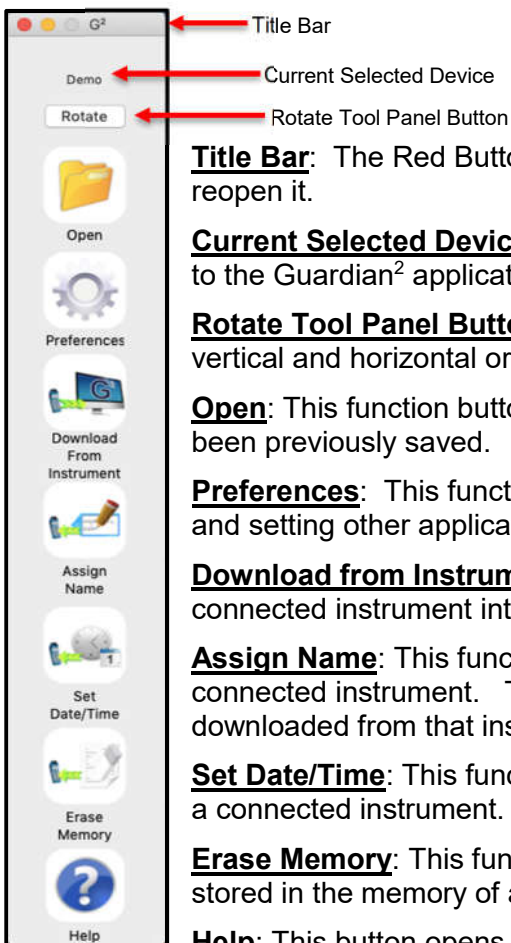


Figure 2

Title Bar: The Red Button closes the Tool Panel. Type Shift+Command+2 to reopen it.

Current Selected Device: This field shows which instrument is currently connected to the Guardian² application.

Rotate Tool Panel Button: Click on this button to toggle the Tool Panel between vertical and horizontal orientation.

Open: This function button allows the user to open .mlcx formatted files that have been previously saved.

Preferences: This function button opens a window for selecting the active device and setting other application preferences.

Download from Instrument: This function button starts the transfer of data from a connected instrument into the Guardian² application environment.

Assign Name: This function button allows you to assign or change the name of a connected instrument. The instrument name is always associated with data downloaded from that instrument.

Set Date/Time: This function button allows you to set the internal date and time for a connected instrument.

Erase Memory: This function button allows you to erase the measurement data stored in the memory of a connected instrument.

Help: This button opens a menu from which the user can view an electronic copy of the Operation Manual, other documents from the website, the Myron L[®] Company's website, and the About page for the application.



Figure 3

4.3 APPLICATION MENU BAR AND COMMANDS

Whenever the Guardian² application is active, the Guardian² application Menu Bar will appear at the top of the macOS desktop. It will include the following menus (Figure 4 through Figure 8).

See Table 1 on page 7 for a short description of each of the menu commands.

Guardian² Menu:



Figure 4

File Menu:

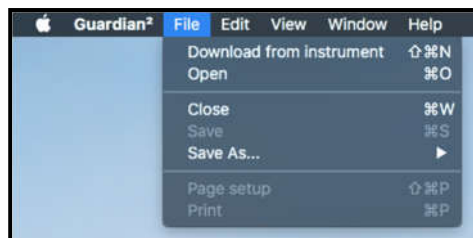


Figure 5

Edit Menu:

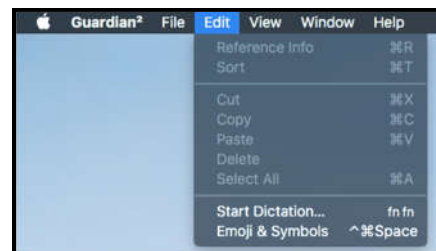


Figure 6

Window Menu:



Figure 7

Help Menu:

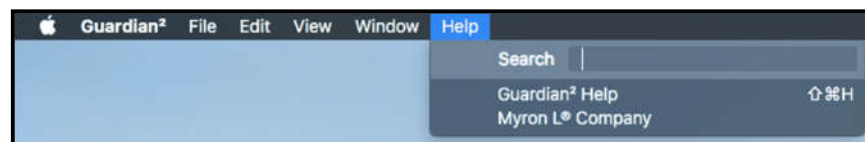

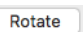


Figure 8

4.4 GUARDIAN² MENUS, CONTROLS, AND SHORTCUTS

Table 1: macOS Internal Menus and Commands

(Some of the Keyboard Shortcuts will only work if the correct window is selected: Data Window or Tool Panel Window.)

MENU	COMMAND	KEYBOARD SHORTCUT	MAIN TOOL PANEL BUTTON	NOTES:
General Controls	MINIMIZE TOOL PANEL	⌘M		Minimizes the Tool Panel. To restore the tool panel, mouse over the Guardian ² ™ Icon in the Dock and click on it.
	ROTATE TOOL PANEL			Toggles the Tool Panel between Vertical and Horizontal orientation.
Guardian²™	ABOUT GUARDIAN ² ™			Brief description of the Guardian ² ™ and revision number.
	PREFERENCES	⌘,	YES	Opens a window for selecting the Available Device and setting other application preferences.
	ASSIGN NAME	⇧ ⌘A	YES	Changes the name stored in the connected instrument's memory.
	SET DATE / TIME	⇧ ⌘T	YES	Edits the connected instrument's Time and Date settings.
	ERASE MEMORY	⇧ ⌘E	YES	Erases all measurement data stored in the connected instrument.
	HIDE GUARDIAN ² ™	⌘H		Minimizes the active Guardian ² ™ Data Window.
	HIDE OTHERS	⌘H		Hides active windows from other applications and only displays Guardian ² ™ application.
	QUIT	⌘Q		Closes all windows and Quits the Guardian ² ™ application.
FILE	DOWNLOAD FROM INSTRUMENT	⇧ ⌘N	YES	Initiates transfer of data from an instrument.
	OPEN	⌘O	YES	Opens and displays data from a saved .mlcx file.
	CLOSE	⌘W		Closes the active Data Window.
	SAVE	⌘S		Saves the active Data Window in encrypted .mlcx file format.
	PRINT	⌘P		Prints the contents of the active Data Window or print to .pdf.
	PAGE SETUP	⇧ ⌘P		Opens a window for selecting Format, Paper Size, Orientation, and Scale.
Save As	MLCX	⌘M		Saves the active Data Window in encrypted .mlcx file format.
	XLSX	⌘X		Saves the active Data Window in .xlsx file format.
	XLS	⌘S		Saves the active Data Window in .xls file format.
	CSV	⌘C		Saves the active Data Window in .csv file format.
	PDF	⌘P		Saves the active Data Window in .pdf file format.
EDIT	REFERENCE INFO	⌘R		Toggle to Show and Hide the Reference Info Field at the bottom of the Data Window.
	SORT	⌘T		Allows user to sort the data by up to 3 sort keys.
	Reference Info Field Editing Commands – Only functional when the Reference Info Field is activated.			
	CUT	⌘X		Cuts selected text from the Reference Info Field.
	COPY	⌘C		Copy's text from the Reference Info Field.
	PASTE	⌘V		Pastes text into the Reference Info Field.
	DELETE			Deletes text from the Reference Info Field.
	SELECT ALL	⌘A		Selects all text in the Reference Info Field.
	SPECIAL CHARACTERS	Control⌘Space		Allows special characters and symbols to be input into the Reference Info Window.
WINDOW	MINIMIZE	⌘M		Minimizes the active Guardian ² ™ Data Window.
	ZOOM			Maximizes the active Guardian ² ™ Data Window.
	TOOL PANEL WINDOW	⇧ ⌘2		Opens the "Tool Panel" startup window if it has been closed.
	BRING ALL TO FRONT			Brings all Guardian ² ™ windows to the front of the desktop.
HELP	GUARDIAN ² ™ HELP	⇧ ⌘H		Displays a .pdf version of the Guardian ² ™ Operation Manual.
	MYRON L [®] COMPANY			Opens a browser window and takes the user to the Myron L [®] Company website.
KEY: ⌘ This symbol indicates the Apple Keyboard COMMAND (or "flower") key. ⇧ This symbol indicates the SHIFT key. ⌘ This symbol indicates the OPTION (or Alt) key.				

4.5 DATA WINDOW COMMAND RIBBON

Each open Data Window has its own COMMAND RIBBON (Figure 9) which includes quick action buttons see below:

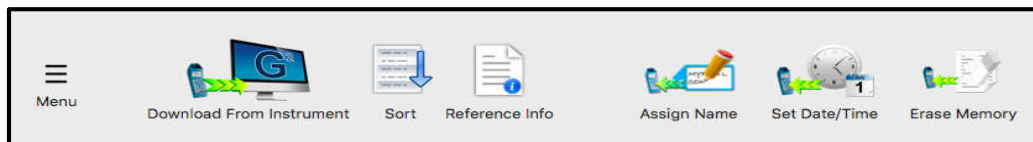





Figure 9

Click the  FILE CONTROL MENU button to open the MENU dialogue box, which contains Download from Instrument, Open .mlcx file, Save, Save As, Print and About options.

Click the  Download From Instrument button to download data from the instrument to the Data Window.

Click the  SORT button to open the Multi-Key Sort dialogue box.

Toggle the  REFERENCE INFO button to Show / Hide the Reference Info Field.

Click the  Assign Name button to assign a unique name to the Ultrameter.

Click the  Set Date/Time button to set/change the Date and Time on the Ultrameter.

Click the  Erase Memory button to completely erase the data from Ultrameter's memory.

4.6 FILE CONTROL MENU

- This menu contains commands for downloading or appending new data, opening saved .mlcx files, saving, exporting (Save As) and printing. (Figure 10).
- See Guardian² Menus, Controls and Shortcut table on page 7 for a brief description of these commands.

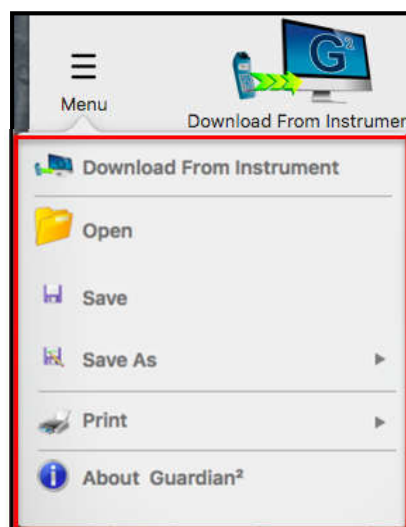


Figure 10

5. GUARDIAN² DATA WINDOW

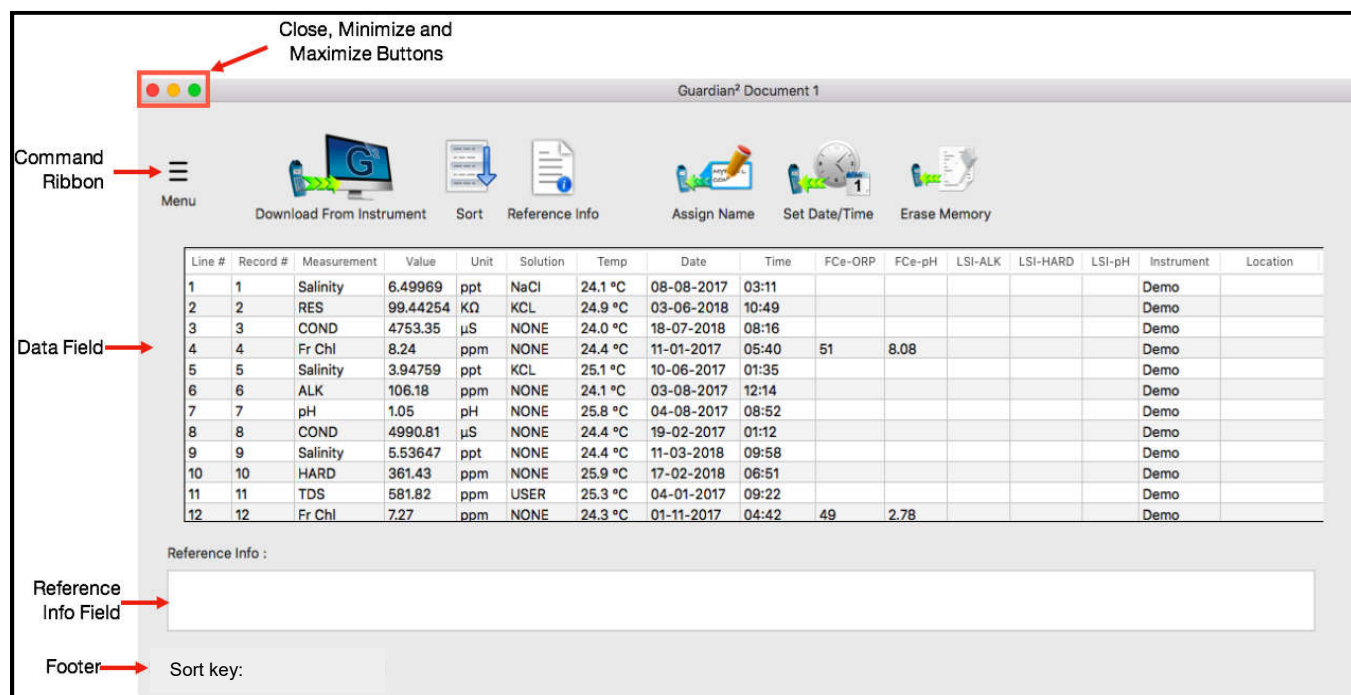


Figure 11

5.1 DATA WINDOW LAYOUT

Data that is either downloaded from a Myron L[®] Company instrument or loaded from an .mlcx formatted data file is displayed in a Data Window. This window includes:

HEADER: The header of each Data window contains:

- The Title of the Window (Default title is "Guardian² Document #" until the data is saved).
- Close, Minimize and Maximize buttons.
- **COMMAND RIBBON:** This area at the top of the window includes a variety of icons that are shortcuts to launch various Data Window functions (see Section 4.5).

THE DATA FIELD: This field displays the data in a tabular format with individual records organized in rows and the individual data fields of each record organized in columns.

- The information displayed in these columns and rows is secure and cannot be edited or changed.

REFERENCE INFORMATION FIELD: This is an editable field which allows the user to add general notes or supplementary information about the data (see Section 8.6).

FOOTER: The following information will appear at the bottom of the Data Window:

- The current setting for the multiple key SORT feature:
 - This will list the current sort keys and whether they are set for ascending vs descending order.
 - This section following the phrase "Sort Key:" will be blank until the Multiple Sort function is used.

5.2 DATA TAB – COLUMN DEFINITIONS

COLUMN FORMATTING:

- The width of the various columns of the Data Tab may be resized by placing the cursor over the dividing line between column headings then clicking and grabbing the line, then slide it left or right.
- The order of columns can be changed by placing the cursor anywhere inside the column heading, then grabbing and sliding the column left or right until it is in the desired position.

COLUMN DEFINITIONS

Line #: This is the number for the row in the Data Window. It is not part of the data that is downloaded from the instrument. It will not change or move when the data is sorted.

Record #: This is the memory location where the data for this measurement was stored in the source instrument's memory. It will move with the data row when the data is sorted.

- Since the data in each of the instruments memory locations can be over-written the record number is not always in chronological order.
- If the data in a specific instrument memory location has been cleared, it is not included in the downloaded data and therefore will not appear in the Guardian² window.

Measurement: This field shows the type of measurement that was made, such as Conductivity (COND), Resistivity (RES), Total Dissolved Solids (TDS), MIN/SALT (Salinity), pH, ORP, FC^E™ (Fr. Chl), Hardness (HARD), Alkalinity (ALK), DPD^E (DPDe) or LSI.

- Temperature is recorded in a separate column.
- When downloading data from a D-6 or some legacy instruments, FC^E is reported as "ORP-PPM" in the measurement column.

Value: This field contains the measured value of the reading.

Units: This field displays the units of measure for that measurement.

Solution: This field shows the temperature compensation model setting of the instrument when the measurement was taken.

- Some Myron L[®] Company instruments can make certain measurements using more than one type of temperature compensation models, each of which corresponds to particular solution type (e.g. NaCl, KCl, 442™, etc.).
- For measurement types where there is only one or no temperature compensation curve, such as FC^E, ORP, pH, LSI etc., this field displays "None".

Temp: This field displays the temperature of the solution being measured at the time of the measurement.

Date: This field displays the date of the measurement.

Time: This field displays the time of the measurement.

FC^E-Columns: Myron L[®] Company FC^E (Free Chlorine Equivalent) ppm measurements are calculated based on the ORP value and pH value of the solution.

- **FC^E-ORP:** This field displays the solution's ORP mV value when the FC^E measurement was made.
- **FC^E-pH:** This field displays the solution's pH value when the FC^E measurement was made.

LSI-Columns: These Columns display the base values that were used to calculate the value that is displayed in the Measurement column for LSI readings.

- **LSI-ALK:** This field displays the Alkalinity value used to calculate the LSI value.
- **LSI-HARD:** This field displays the Hardness value used to calculate the LSI value.
- **LSI-pH:** This field displays the pH value used to calculate the LSI value.

Instrument: This field contains the name given to the instrument with which the measurement was made (see ASSIGN NAME).

- If the instrument has not been assigned a name, this field will be blank.

Location: Not applicable to the current desktop version of the Guardian² application; however, it is displayed as an example in the Demo Data.

6. PAIRING TO AND UNPAIRING FROM AN INSTRUMENT

6.1 GENERAL INFORMATION

If your computer does not have a built in Bluetooth wireless technology transceiver:

- Plug an external Bluetooth wireless technology dongle into a USB port on your computer.
- If you don't have a Bluetooth dongle, one can be purchased from a local electronics store or online.

NOTES:

- The passkey for ALL Myron L[®] Company bluDock enabled devices is "**1234**".
- **ALWAYS** write down the port designation assigned to each instrument. It should look something like this example: "**MyronL-07AD**" (The four characters "07AD" after the dash can vary with instruments).

6.2 TURNING ON THE MYRON L[®] COMPANY INSTRUMENT'S PC MODE


1) Turn on the PC mode for your Myron L[®] Company instrument:

a. Press any measurement function key on the instrument (e.g. COND, pH, ORP, etc.).

b. Press and hold the down arrow key  until the "**PC OFF**" appears on the instrument's display. (Figure 12)



Figure 12

c. Press and release the CAL button .

- The display will briefly change to read "**PC Ini**".
- d. Wait until the LCD changes to read "**PC ON**". (Figure 13)

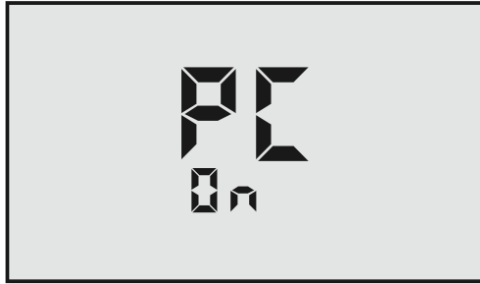


Figure 13

- 2) IMMEDIATELY proceed to *Pairing to a Myron L® Company Instrument* (see Section 6.3).

6.3 PAIRING TO A MYRON L® COMPANY INSTRUMENT

NOTE:

If the Myron L® Company instrument times out at any time during this process, restart it and turn on the PC ON Mode (see Section 6.2).
Generally, you may return to the pairing process where you left off without restarting.

To pair to a Myron L® Company instrument using macOS 10.13:


- 1) Click on the Bluetooth icon  on the right side of the macOS Finder menu bar.
 - If the following menu appears (Figure 14), select "**Turn Bluetooth On**".



Figure 14

- 2) Reopen the Bluetooth menu and select "**Open Bluetooth Preferences**" (Figure 15).

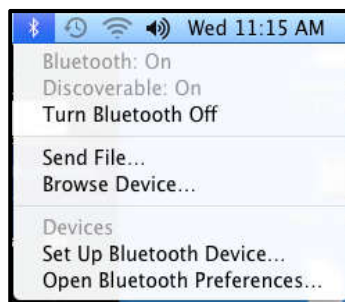


Figure 15

- If there is no device paired to the user's computer, the Bluetooth Preference Window will look like the first image in (Figure 16).
- If there are already devices paired to your computer but the instrument you wish to interact with is not on the list on the right side of the window, wait for the Ultrameter to show up in the list and proceed to the next step.

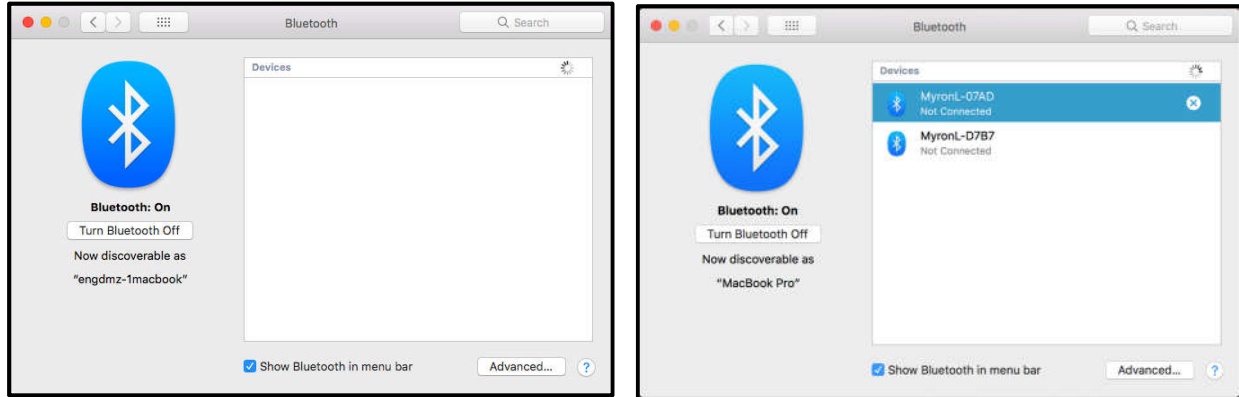


Figure 16

- 3) Wait for the Myron L[®] Company instrument to appear in the device list of the macOS Bluetooth Preference Window, select it. It should look something like **"MyronL-00C4"** (The characters "00C4" after the "-" will vary with instrument) (Figure 17).
 - Click **"Connect"**.

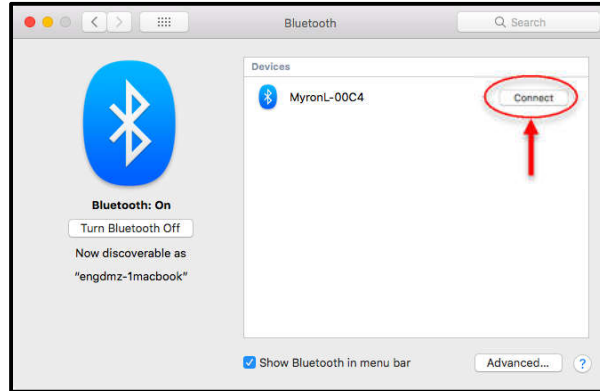


Figure 17

- 4) Once the device gets paired it will display a message as shown in Figure 18 with a red line. This means the computer-generated pass key was not accepted by the device. It shows "0000".

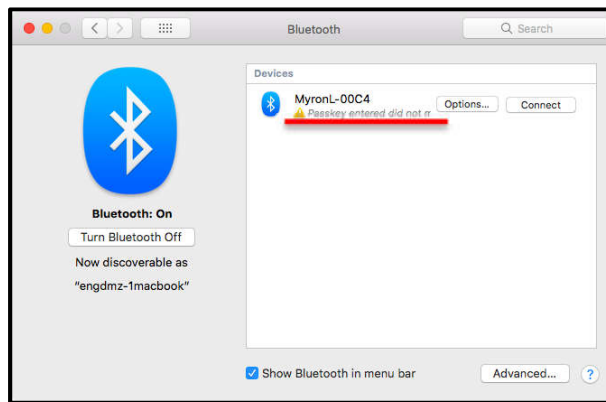


Figure 18

- 5) Click on the **"Options..."** button.
- 6) Type the default passkey **"1234"** into the dialogue box when it is available (this is the default passkey for all Myron L[®] Company Bluetooth equipped instruments) (Figure 19).
- Click **"Connect"** to return to the previous screen.

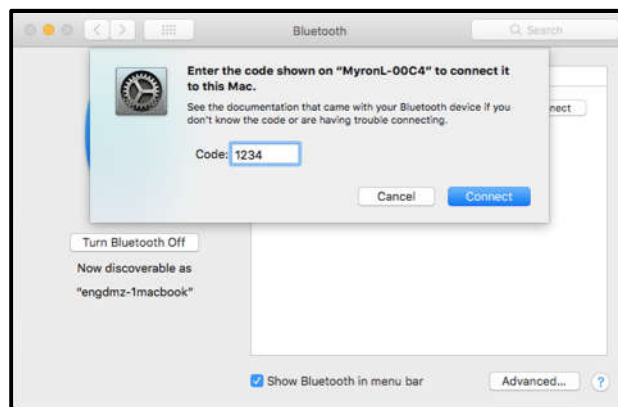


Figure 19

- 7) When the pairing is successful, it will show **"Connected"** below the device name.
- 8) Click the Red button shown by the arrow in Figure 20 to exit.

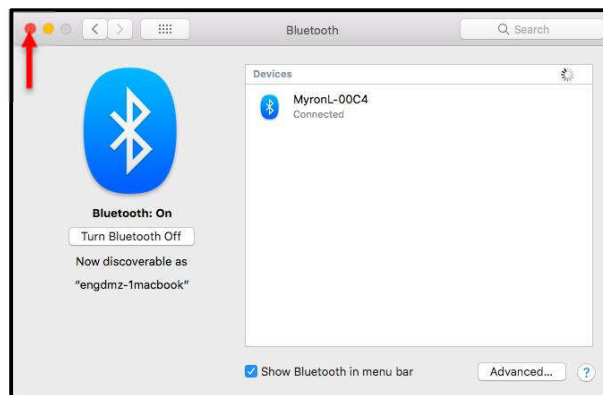


Figure 20

6.4 UN-PAIRING AN INSTRUMENT

To completely remove an instrument from your computer:

- 1) Open the macOS Bluetooth Preference Window.
- 2) Select the device from the list of devices previously paired to your computer.
- 3) Click on the “X” button shown by the arrow (Figure 21).

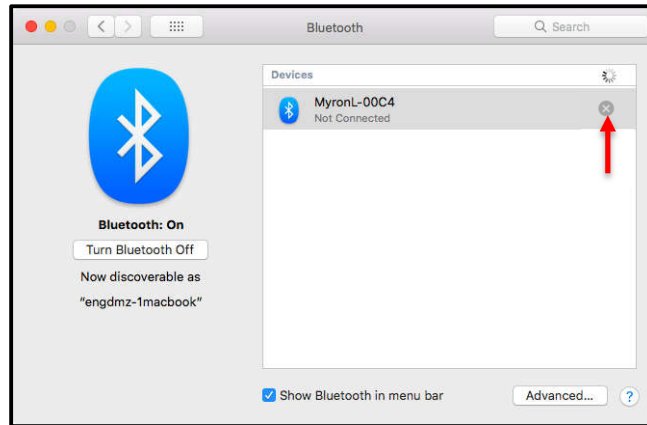


Figure 21

- 4) The macOS will ask you if you are sure, click on "**Remove**" (Figure 22).

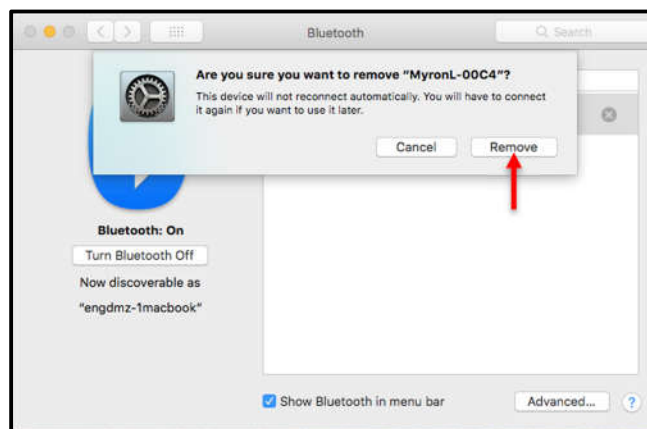


Figure 22

7. GUARDIAN² INSTRUMENT FUNCTIONS

7.1 GENERAL NOTES ON INSTRUMENT FUNCTIONS

WARNING!

Do Not Press any of the buttons on the keypad of the instrument once the Guardian² related function has started. This will cause the PC mode to turn "OFF".

If the PC mode is turned "OFF" or the instrument times out while a Guardian² application function is in process, the Guardian² application will show connection ERROR.

Before launching any of the Functions described in this section make sure that:

- The instrument's "Auto Off" feature is set to **75** seconds.
- The instrument is awake and that the PC mode is set to "**ON**" (see Section 6.2).
- The instrument is paired to your computer and the connection is active (see Section 6.3).

An error message will appear, similar to the example shown (Figure 23), if:

- The instrument is asleep or if its PC Mode is "**OFF**";
- The computer Bluetooth is turned "**OFF**";
- The wrong device is selected in the Guardian² Preference/Available Devices drop down menu;
- The instrument's Bluetooth signal is too weak.
 - Try moving the instrument closer to the host computer.
 - Replace the battery (even if the "Lo Batt" indicator is not lit on the instrument display, the battery may be too weak to broadcast a strong signal).

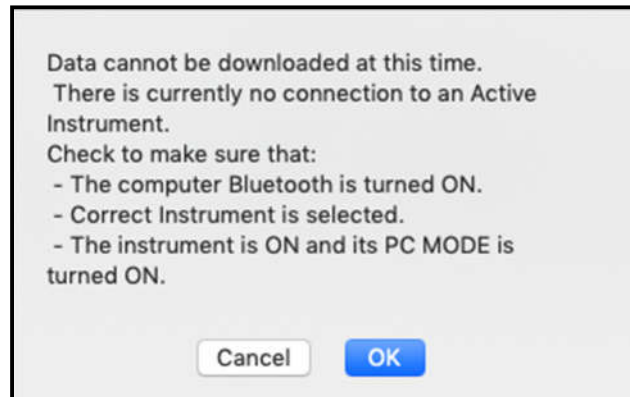


Figure 23

Once the issue is corrected:

- Click the "**OK**" button to proceed, or;
- Click the "**Cancel**" button to abort the process.

NOTE

To prolong the battery life of your Myron L[®] Company instrument, turn the instrument's PC mode "OFF" as soon as you have finished interacting with the Guardian² application.

7.2 SELECTING AVAILABLE DEVICES

- 1) Open the Preferences/Available Devices drop down menu by clicking on the **PREFERENCES** button on the Tool Panel (Figure 24).



Figure 24

- 2) Select the Available Devices drop down menu (Figure 25).

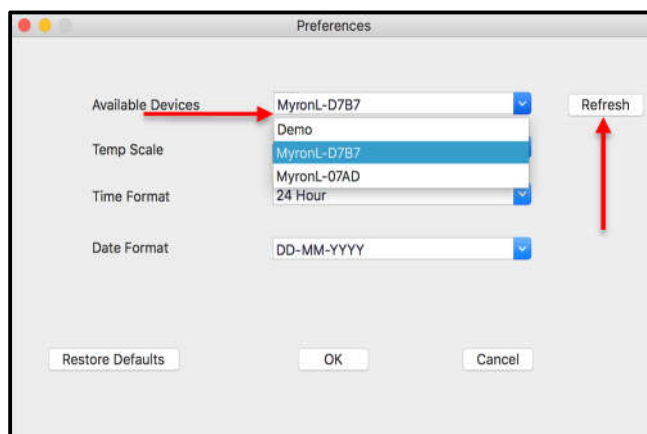


Figure 25

- a. Find the Device designation assigned to your instrument during the pairing process (see Section 6).
- 3) Click the **"OK"** button to complete the selections and close this Preferences Window.
 - The Selected Device will be displayed on the Tool Panel, just below the Title Bar.
 - If you add/remove any devices after the Guardian² application has been opened, click on the "Refresh" button to refresh the list of Available Devices. This will add/remove the device from the list of Available Devices.
 - Click the "Cancel" button to abort the process.

NOTES:

- The Available Device default setting is **DEMO**. When **DEMO** is selected, the Guardian² application will download a set of demonstration data and allows you to explore the functionality of the Guardian² application without being connected to an instrument.
- Once selected, a Device will stay selected until you either:
 - Select another Device;
 - Restore the Preferences settings to their defaults.
- If you accidentally add demo data to your data file, close the window without saving it and start over.

7.3 DOWNLOADING DATA

WARNING!

Do Not press any of the buttons on the keypad of the instrument once the Guardian² related function has started. This will cause the PC mode to turn "OFF".

If the PC mode is turned "OFF" or the instrument times out while a Guardian² application function is in process, The Guardian² application will show connection ERROR.

Before launching the Download process make sure that:

- The instrument is awake and that the PC mode is set to "ON" (see Section 6.2).
- The correct Device is selected in the Guardian² Preference/Available Devices drop down menu (See Sections 6.3 and 7.1).

An error message will appear, similar to the example shown in Figure 26 if:

- The instrument is asleep or if its PC Mode is "OFF";
- The computer Bluetooth is turned "OFF";
- The wrong device is selected in the Preference Available Devices drop down menu;
- The instrument's Bluetooth signal is too weak.
 - Try moving the instrument closer to the host computer.
 - Replace the battery (even if the "Lo Batt" indicator is not lit on the instrument display, the battery may be too weak to broadcast a strong signal).

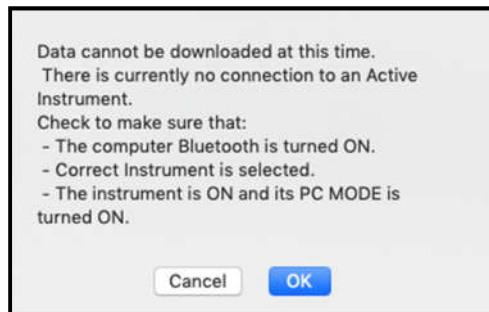


Figure 26

- Once the issue is corrected:
 - Click the "OK" button to proceed, or;
 - Click the "Cancel" button to abort the process.

To start the download process, click on the "Download from Instrument" button in the Tool Panel (Figure 27).

- As the instrument is downloading a progress bar will appear.
- While the download is in progress, the Guardian² application will open an empty Data Window and once the download progress is completed it will display the data.

The Download feature can also be accessed via the Menu in the Data Window Command Ribbon (see Section 4.5).



Figure 27

7.4 APPENDING NEW DATA TO AN EXISTING DATA WINDOW / FILE

You may append data from multiple instruments into an existing Data Window / file:

- 1) If it is not already, open the data file to which you wish to add data (See Section 8).
- 2) Launch the **DOWNLOAD** process (see section 7.3).
- 3) Guardian² will display a window (Figure 28) with the following choices:
 - **Open New Window**: Click this button to open a new Data Window and download the data there.
 - **Cancel**: Click this button to halt the download process and leave any open Data Window unchanged.
 - **Append**: Click this button to download data into this Window / File.
 - The new data will appear at the bottom of the active window.

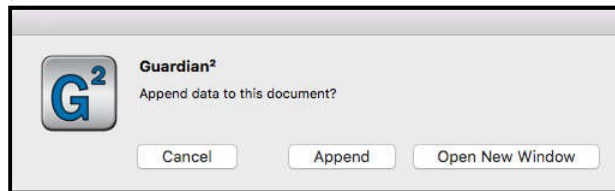


Figure 28

7.5 ASSIGNING A NAME TO AN INSTRUMENT

You can assign a name to an instrument so that the instrument's name is always associated with data downloaded from that instrument.

- The name will appear in the "Instrument" column of the Data Window.

To assign a name to an instrument:

- 1) Make sure that:
 - The instrument is awake and that the PC mode is set to "ON" (see Section 6.2).
 - The instrument is paired to your computer and the connection is active (see Section 6.3).
- 2) Click on the "ASSIGN NAME" button in the Tool Panel (Figure 29).
- 3) Type the desired name into the dialogue box that appears.
 - Maximum length is 8 characters.
- 4) Click the "OK" button to store the name in the instrument's memory (Figure 30).
 - This will overwrite any name already given to the instrument.
 - To undo this action, you must rename the instrument using the old name.



Figure 29

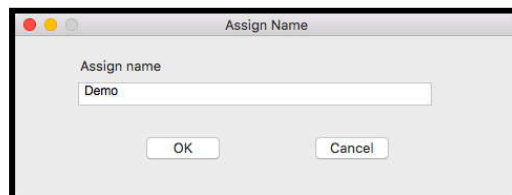


Figure 30

The Assign Name feature can also be accessed via the Menu in the Data Window Command Ribbon (see Section 4.5).

7.6 SETTING THE INSTRUMENT'S DATE AND TIME

You can update or change the Date and Time settings for your Myron L[®] Company instrument via the Guardian² application.

To set the internal Date and Time of an instrument:

1) Make sure that:

- The instrument is awake and that the PC mode is set to "ON" (see Section 6.2).
- The instrument is paired to your computer and the connection is active (see Section 6.3).

2) Click on the "Set Date / Time" button in the Tool Panel (Figure 31).



Figure 31

- The following dialogue box will appear (Figure 32):

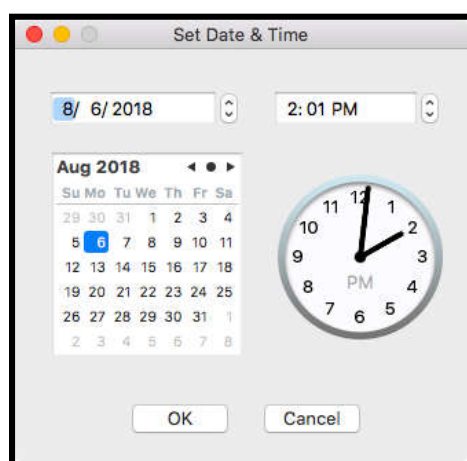


Figure 32

- The default settings should match your computer's current Date and Time settings.
 - ALWAYS check to make sure that they do.
- 3) You may use the controls in this window to correct the Date and Time if the default settings are not correct.
- 4) Click the "OK" button to change the instrument's Date and Time setting to match those displayed in the window.
- This will overwrite the current Date and Time settings for the instrument.
 - If you have changed the Date and Time using the Guardian² window controls, this WILL NOT reset your computer's Date and Time.

The Set Date / Time feature can also be accessed via the Menu in the Data Window Command Ribbon (see Section 4.5).

7.7 ERASING MEASUREMENT DATA FROM AN INSTRUMENT

WARNING!
This action cannot be undone.

You may use the Guardian² application to erase the recorded readings stored in your Myron L[®] Company instrument.

- This function erases all of the recorded readings stored in the instrument's memory.
- It does not erase calibration constants, preference settings, date and time settings, etc.

To start the Erase Memory Process:

1) Make sure that:

- The instrument is awake and that the PC mode is set to "**ON**" (see Section 6.2).
- The instrument is paired to your computer and the connection is active (see Section 6.3).

2) Click on the "**Erase Memory**" button in the Tool Panel (Figure 33).

- A dialogue box will appear that asks you to confirm the Erase Memory command.

3) Click the "**OK**" button to proceed (Figure 34).

- Click the "**Cancel**" button to abort the erase operation and leave the instrument's memory unchanged.



Figure 33

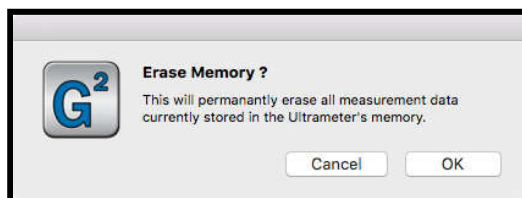


Figure 34

The Erase Memory feature can also be accessed via the Menu in the Data Window Command Ribbon (see Section 4.5).

8. GUARDIAN² FEATURES

8.1 LOADING A SAVED .mlcx FILE

Once a file has been saved as an encrypted .mlcx formatted file it can be reloaded into the Guardian² application to append, sort, etc...

To LOAD a previously saved .mlcx data file use one of the following methods:

1) Click on the "**Open**" button on the Tool Panel (Figure 35).

- A standard macOS browse window will appear.
- Select the .mlcx file you wish to open. (Only .mlcx formatted files may be selected.)
- Click on the Open button on the bottom of the window.

2) Double Click on the .mlcx file.



Figure 35

NOTE: Data exported using the SAVE AS command in other formats (.xls, .xlsx, .csv and .pdf) cannot be re-loaded into the Guardian² application.

8.2 SAVING DATA IN ENCRYPTED .MLCX FORMAT

The Guardian² application is designed to keep your data secure and unadulterated. The **SAVE** command automatically exports the contents of the currently active Data Window to an encrypted .mlcx file format that cannot be read or edited by other types of software.

To save the data in a new or updated Data Window:

- Select the "**Save**" or "**Save As**" command under active Data Window's Menu Window (Figure 36).

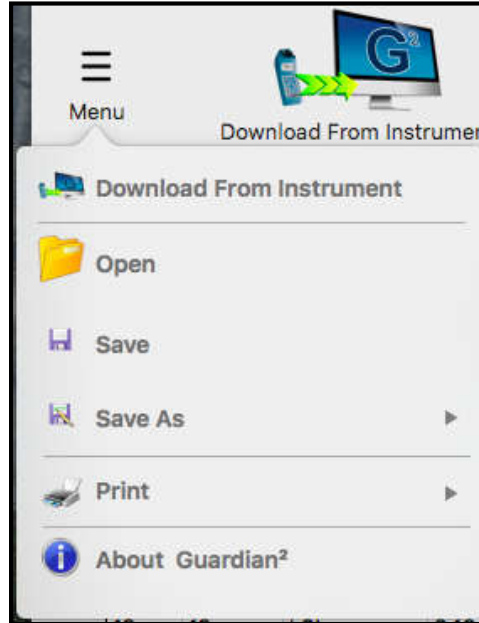


Figure 36

8.3 CLOSE THE WINDOW OR QUIT THE APPLICATION

If the document has been changed, a standard Save dialogue box (Figure 37) will open that allows you to:

- Save and Close the file.
- Close the window without Saving the file.
- Cancel the operation.

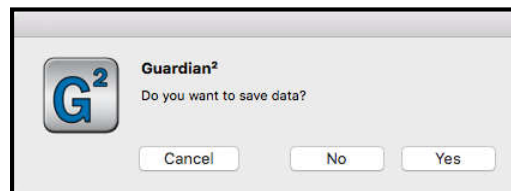


Figure 37

NOTES:

- The Save command automatically exports the data as an encrypted .mlcx formatted file.
- Only files saved as .mlcx formatted files can be reopened by the Guardian² application.

8.4 EXPORTING DATA IN AN OPEN FORMAT (SAVE AS)

The Guardian² application also allows you to export data so that it is useable by other programs.

To export data from an open Guardian² Data Window:

- 1) Select the "**Save As**" command under the active Data Window's Menu Window (Figure 38).

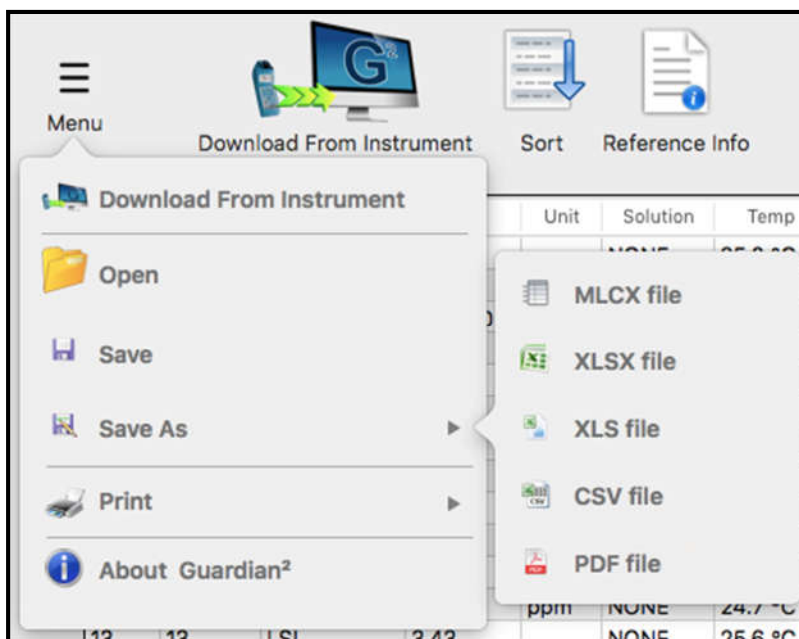


Figure 38

- 2) Select the file format:
 - Choose one of the following file formats for the exported data:
 - MS Excel 97-2004 (.xls).
 - MS Excel 2007 and later (.xlsx).
 - Comma Separated Values format (.csv).
 - Portable Document Format (.pdf).
- 3) Except for Save As .PDF, a standard Save dialogue box will open that allows you to:
 - Select the save location.
 - Give the file a name.
- 4) Complete the process by either:
 - Clicking "Save" to proceed with the export process or;
 - Click "Cancel" to halt the operation.

NOTES:

- The formats listed above are not encrypted.
- Print dialogue box will open when you try to save in .PDF format. The user must follow standard macOS Save As PDF procedure in order to save in a .PDF format.
- You will not be able to reopen the exported copies of the data using the Guardian² program.
- Unlike the Save As operation of other macOS applications, the Guardian² application does not rename the open .mlcx file or convert it to the chosen format.
 - Instead it creates a copy of the data, in the chosen format, at the location specified in the Save As dialogue box.

8.5 PRINTING AND PRINT PREVIEW

Guardian² data can be printed using the Print function and Print commands. These files can be printed in either Portrait or Landscape orientations (located in the Page Setup settings).

When printed:

- The Data tab will print on top.
- The contents of the Reference Info Field will appear at the bottom of the last page of the data printout.

PRINTING:

- 1) Open the print dialogue box (Figure 39):
 - a. Select the **"Print"** command under the Menu Window.
 - b. Select **"Print"** from the choices in the pop up menu.

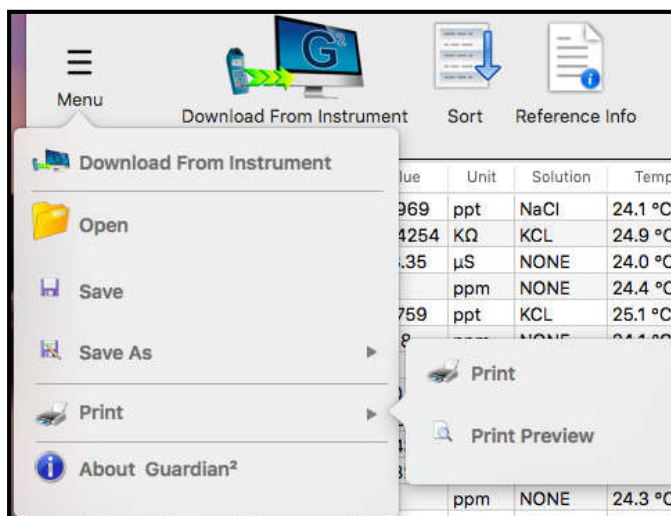


Figure 39

- 2) A print dialogue box will appear.
 - The exact layout and content of this dialogue box will be dependent on the specific printer drivers installed on your system as well as the operating system.
- 3) Click the Print button.

PRINT PREVIEW:

- 1) Open the print dialogue box:
 - a. Select the **"Print"** command under the Menu Window.
 - b. Select **"Print Preview"** from the choices in the pop up menu.

Selecting the Print Preview option will open a separate window that allows you to view each page of the prospective printout. You may also choose to print from this Print Preview, by clicking on the Print button located at the top right of the window. In order to close the Print Preview Window, click on the Red Close button, located at the top left corner of the window.

8.6 ADDING REFERENCE INFORMATION

Each Data Window includes a Reference Info Field that is an editable field that appears at the bottom of the Data Window where the user can add general notes or supplementary information about the data.

You can Show or Hide this field by clicking the "**Reference Info**" button in the active Data Window's Command Ribbon (Figure 40).

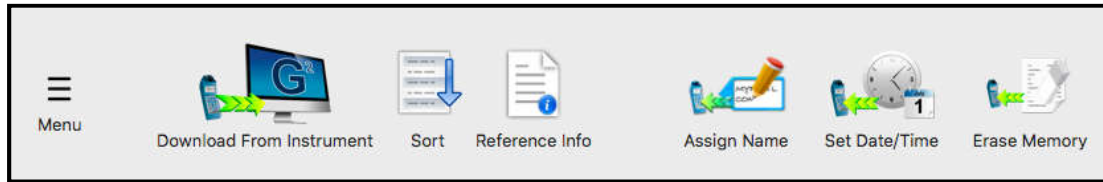


Figure 40

Place the cursor anywhere within the Reference Info Field at the bottom of the Data Window and click:

- A blinking text cursor (a vertical line) will appear. You may now begin entering information.
- Once you have completed entering or editing the reference information, Use the standard "**Save**" command to retain the information.

NOTES:

- Clicking the Reference Info button will toggle between showing and hiding the reference information field.
- The Reference Info Field will accept all standard alpha numeric characters available in the Ariel font set including manual line breaks (Return key).
- If the contents exceed the vertical size of the window a vertical scroll bar will appear.
- The Reference Info Field has a 500 character count limit.
- Once you have completed entering or editing the reference information, Use the Save command to preserve the information in this data file / window.

REFERENCE FIELD SHORT CUT KEYS

The following Keyboard Shortcuts can be used when editing the Reference Info Field.

(CMD +X): Cuts selected text from the Reference Info Field.

(CMD +C): Copy's text from the Reference Info Field.

(CMD +V): Pastes text into the Reference Info Field.

(CMD +A): Selects all text in the Reference Info Field.

8.7 SORTING DATA

QUICK SORT:

- 1) Click the Column heading of any column (except the "Line #" column) to sort the entire data file according to its contents.
 - The first time you click a column it will sort the file in ascending order according to that column.
 - Each time you click the same column the application will alternate between ascending and descending order.

Table 2 – Data Field Sorting Styles

Column	Data type	Sorting method
Line #	N/A	This column includes the line number within the data table and is not sortable.
Record #	Value Field	Numeric Sorting
Measurement	Text Field	Alphabetic Sorting – Not case sensitive
Value	Value Field	Numeric Sorting
Unit	Text Field	Alphabetic Sorting – Not case sensitive
Solution	Text Field	Alphabetic Sorting – Not case sensitive
Temp	Value Field	Numeric Sorting
Date	Date Field	Date Sorting: Numeric sorting by Year 1st, Month 2nd; Day 3rd.
Time	Time Field	Time Sorting: Numeric sorting by Hours 1st, Minutes 2nd, Seconds 3rd.
FCe-ORP	Value Field	Numeric Sorting
FCe-pH	Value Field	Numeric Sorting
LSI-ALK	Value Field	Numeric Sorting
LSI-HARD	Value Field	Numeric Sorting
LSI-pH	Value Field	Numeric Sorting
Instrument	Text Field	Alphabetic Sorting – Not case sensitive
Location	Text Field	Not Applicable

NOTES:

- Numeric Sorting: Numeric fields are sorted as numbers. Ascending order would be:
1, 2, 3, 4, 5, 6, 7, 8, 9, 10, 11 20, 21, ... 30,31 ...
- Alphabetic Sorting: Text Fields are sorted alphabetically. Numbers are treated like words, NOT numbers, (with each numeral considered to be a separate letter) Ascending order would be:
1, 10, 11, ... 2, 20, 21, ... 3, 30, 31 (space) ! " # \$ % & () * , . / : ; ? @ [\] ^ _ ` { | } ~ + < = > A B C D E F G H I J K L M N O P Q R S T U V W X Y Z.

Multi-Key Sorting

You can do up to 3-level nested sorting by:

- 1) Clicking the "**SORT**" button in the Data Window's Command Ribbon (Figure 41 & Figure 42).



Figure 41

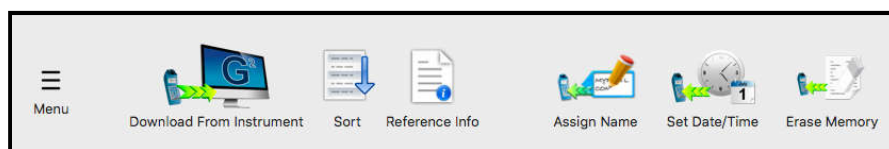


Figure 42

2) The following dialogue box will appear (Figure 43):

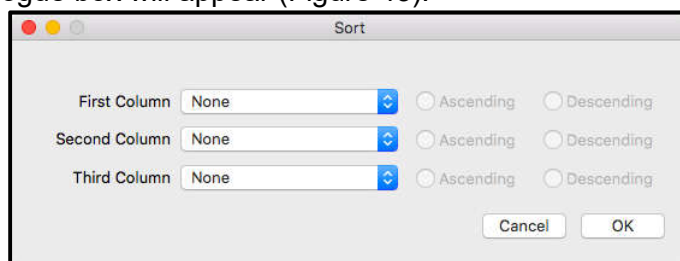


Figure 43

3) For each of the nested sort keys:

- Use the drop down menus from this window to select a data column for each of the desired sort keys. (Figure 44).
 - The default setting for each key is "**None**".
 - Choosing "None" deactivates that key.
- Select whether to sort in ascending or descending order.

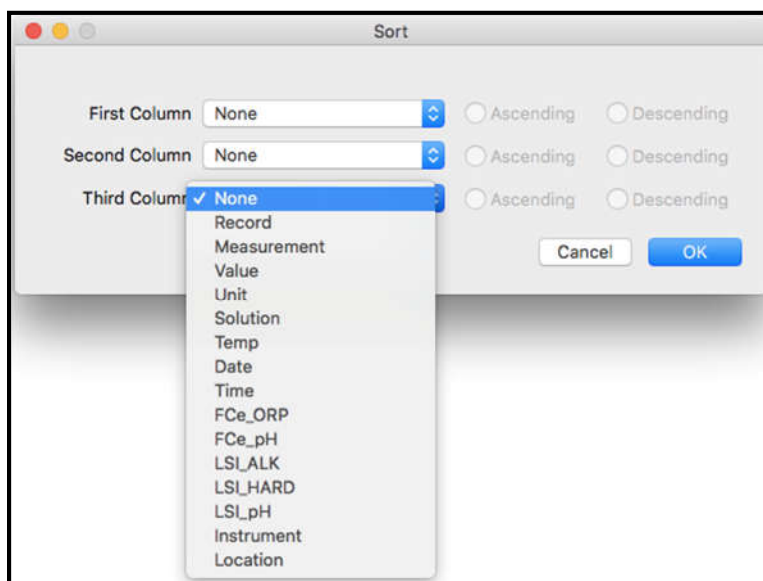


Figure 44

4) Click the "**OK**" button to proceed.

- Click the "**Cancel**" button to abort the operation.

NOTE: Setting all three keys to "None" will reset the contents of the Data Window to their original download order.

8.8 PREFERENCES

The Guardian² Preference dialogue box allows the user to:

- Select from Available Devices and therefore with which instrument the Guardian² application will be interacting.
- Change the manner in which the following data is displayed:
 - Temperature Scale
 - Time Format
 - Date Format
- These display format settings effect all tabs in the open Data Window.

To view and/or change the Guardian² Preferences:

- 1) Open the **Preference** dialogue box by clicking the "**Preferences**" button on the Tool Panel (Figure 45).



Figure 45

The following dialogue box will appear (Figure 46).

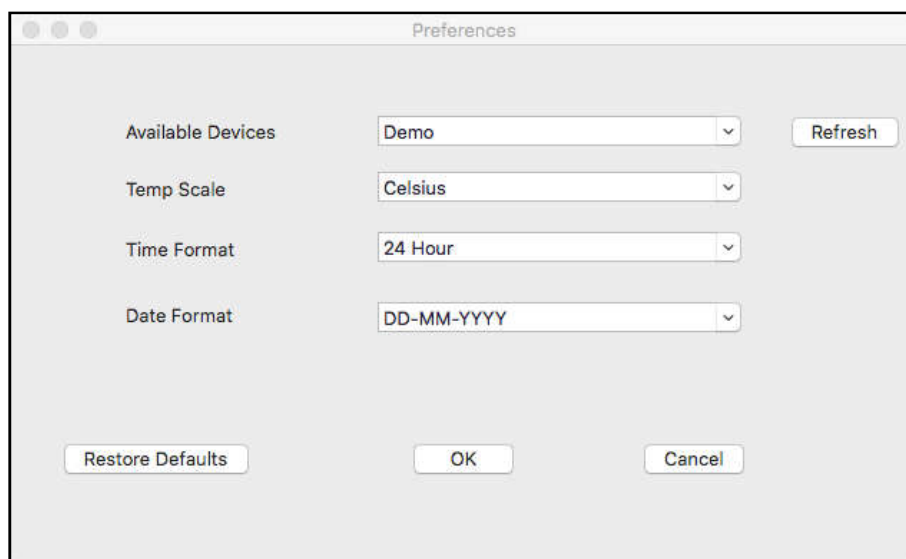


Figure 46

- **Available Devices:** The drop down menu lists the currently available Myron L[®] Company instruments that have been paired with the Guardian² (see Section 6).
 - **Temp Scale:** This drop down menu allows you to choose between displaying temperature data in degrees Celsius (°C) or degree Fahrenheit (°F).
 - **Time Format:** This drop down menu allows you to choose between displaying times as either 12-hour **AM / PM** format or in a **24-hour** format (e.g. 4:00PM = 16:00).
 - **Date Format:** This drop down menu allows you to choose between displaying dates in either:
 - **Day First** Format (DD-MM-YYYY).
 - **Month First** format (MM/DD/YY).
 - **Year First** Format (YYYY-MM-DD).
- NOTE: Format choice does not affect the sort order for dates.

- 2) Once you have made your selections:

- Click "**OK**" to save the chosen/reset preferences and close the dialogue box.
- Click "**CANCEL**" to close the dialogue box without saving changes to the preference settings.
- Click "**RESTORE DEFAULTS**" to reset all of the preference settings to their default selections.

9. TROUBLESHOOT

9.1 ERROR MESSAGES

General Error Messages

At various times during operation the Guardian² application may issue an error message. The most common place this can occur is if the user attempts to perform any action that requires the Guardian² application to communicate with a Myron L[®] Company instrument, but one of the following exists:

- The instrument is asleep;
- The instrument is awake but the PC mode is off;
- The Bluetooth on the user's computer is not enabled;
- The Bluetooth Preference Window indicates that the device connection is closed;

If this is the case the Guardian² application will display an error message.

EXAMPLE: The user clicks the "Download from Instrument" button in the Tool Panel Window while the currently paired and connected Ultrameter is asleep. The following message will appear (Figure 47):

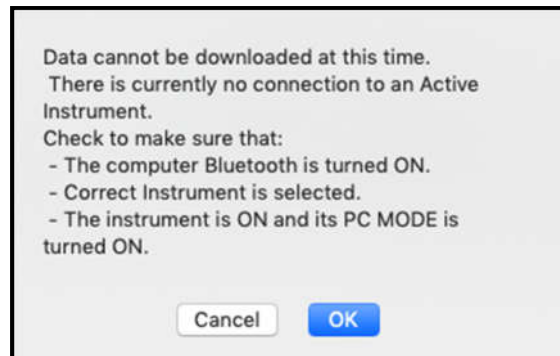


Figure 47

- Click the "**CANCEL**" Button to stop the process, or;
- Correct the underlying connection issue by following the instructions of Pairing and Connecting to an instrument (Section 6), then Click the "**OK**" button to continue.

The functions for which this type of Error message can appear are:

- DOWNLOAD FROM INSTRUMENT
- ASSIGN NAME
- SET DATE TIME
- ERASE MEMORY

Corrupt Data Warning Window

For previous firmware versions, when the user saves data on their instrument as Conductivity (COND) in USER mode, Resistivity (RES) in USER mode, Total Dissolved Solids (TDS) in USER mode, and Free Chlorine Equivalence (FC^E), Guardian² will not be able to show the data properly. Therefore, it will show a pop-up Warning Window when it detects such data is being downloaded (Figure 48). The Data Window will show all the non-corrupted data properly, but for the data that is corrupted, it will display an “ ** ” in the Value column of the Data Window (Figure 49).

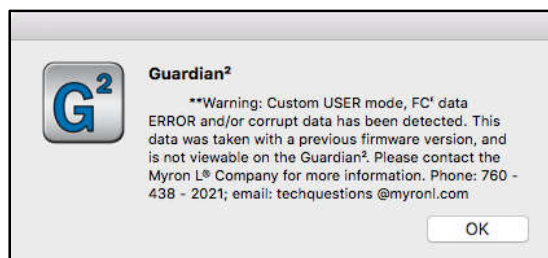


Figure 48

Guardian² Document 2

Menu Download From Instrument Sort Reference Info Assign Name Set Date/Time Erase Memory

Line #	Record #	Measurement	Value	Unit	Solution	Temp	Date	Time	FCe-ORP	FCe-pH	LSI-ALK	LSI-HARD	LSI-pH	Instrument	Location
1	1	Fr Chl	**	ppm	NONE	23.5 °C	2000-09-23	03:37	389	3.50				Test6	
2	2	RES	**	KΩ	USER[R...	24.2 °C	2000-09-23	06:08						Test6	
3	3	RES	**	KΩ	USER[R...	24.2 °C	2000-09-23	06:08						Test6	
4	4	RES	**	KΩ	USER[R...	24.2 °C	2000-09-23	06:08						Test6	
5	5	TDS	**	ppm	USER[R...	24.2 °C	2000-09-23	06:08						Test6	
6	6	TDS	**	ppm	USER[R...	24.2 °C	2000-09-23	06:08						Test6	
7	7	TDS	**	ppm	USER[R...	24.2 °C	2000-09-23	06:08						Test6	
8	8	TDS	**	ppm	USER[R...	24.2 °C	2000-09-23	06:08						Test6	
9	9	Fr Chl	**	ppm	NONE	24.2 °C	2000-09-23	06:08	347	3.54				Test6	
10	10	Fr Chl	**	ppm	NONE	24.2 °C	2000-09-23	06:08	347	3.54				Test6	
11	11	Fr Chl	**	ppm	NONE	24.2 °C	2000-09-23	06:08	347	3.54				Test6	
12	12	COND	**	μS	USER[R...	23.6 °C	2000-09-27	02:18						Test6	
13	13	COND	0.00	μS	442	23.6 °C	2000-09-27	02:19						Test6	
14	14	COND	0.00	μS	442	23.6 °C	2000-09-27	02:19						Test6	
15	15	RES	**	KΩ	USER[R...	23.7 °C	2000-09-27	02:19						Test6	
16	16	RES	--	KΩ	442	23.7 °C	2000-09-27	02:19						Test6	
17	17	RES	--	KΩ	442	23.7 °C	2000-09-27	02:19						Test6	

Sort key:

Figure 49

Bluetooth Not Available Warning Window

Bluetooth is required for the Guardian² to communicate with a Myron L® Company instrument. If Bluetooth is turned OFF on your computer, only offline features will function. A warning window will pop up when the Guardian² application is opened (Figure 50).

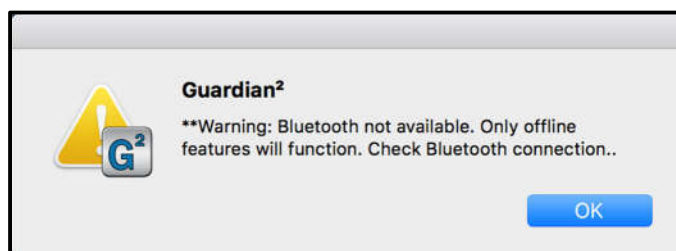


Figure 50

Offline functions include:

- Opening/manipulating previously saved .mlcx files
 - Sorting
 - Adding/modifying Reference Info
 - Formatting data (temperature, time, and date formats)
 - Printing
 - Saving
 - Exporting data (Save As)
- Demo Mode
 - Demo mode allows the Guardian² application to download a set of demonstration data and allows you to explore the functionality of the Guardian² application without being connected to an instrument.

NOTE: While Bluetooth is turned off, the only available device on the Preference pull down menu will be Demo.

9.2 ADDITIONAL TROUBLESHOOTING TIPS

SYMPTOM: The Reference Info Window is missing from the bottom of the Data Window

CAUSE: The Reference Info Window has been hidden.

SOLUTION: Unhide it by clicking the "**REFERENCE INFO**" button on the Data Window's Command Ribbon (Figure 51).

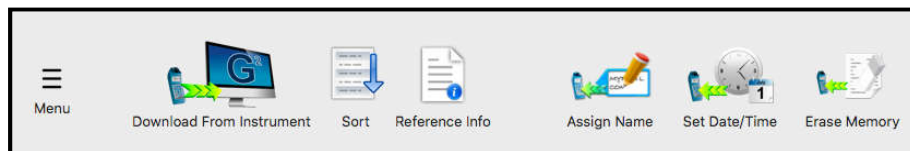


Figure 51

SYMPTOM: "Cannot Connect" error message appears repeatedly during one of the following operations:

- DOWNLOADING FROM INSTRUMENT
- ASSIGNING A NAME
- SETTING THE DATE AND TIME
- ERASING MEMORY

CAUSE: The instrument and the Guardian² application are having trouble communicating.

SOLUTION:

- Check the following and correct it so:
 - The correct device is selected in the Guardian² Preference Window (see Section 7.2).
 - The instrument's is awake and that the PC mode is set to "**ON**" (see Section 6.2).
 - The instrument is paired to your computer and the connection is active (see Sections 6.3).
- The instrument's Bluetooth signal is too weak.
 - Try moving the instrument closer to the host computer.
 - Check to see if the Bluetooth is turned "**ON**", on your computer.
 - Replace the battery (even if the "Lo Batt" indicator is not lit on the instrument display, the battery may be too weak to broadcast a strong signal).

MYRON L[®] COMPANY
2450 Impala Drive
Carlsbad, CA 92010-7226
USA

Tel: +1-760-438-2021
Fax: +1-760-931-9189

E-Mail: info@myronl.com
techquestions@myronl.com

www.myronl.com
Made In USA