

# bluDock™ INSTALLATION INSTRUCTIONS

## Ultrameter II™, PoolPro™ and D-6 DIGITAL DIALYSATE METER™

**NOTE:** Please read these instructions thoroughly and carefully — Damage caused by improper installation or mishandling will void the warranties of the instrument and the new bluDock module.

**CAUTION:** Moisture trapped in instrument will cause damage. Careful adherence to the following procedure will significantly reduce the potential for failure due to moisture contamination.

While the instrument is open, we recommend you replace the battery with a 9V alkaline type. For clarity, this procedure is broken down into three sections. **Follow each section carefully to avoid damage.** Refer to drawings on reverse as necessary.

### I. Preparing and Opening the Instrument Case

1. Remove pH/ORP protective cap from sensor well, shake out fluid and **dry sensor well thoroughly.**
2. If the instrument is wet, dry it thoroughly before proceeding, paying particular attention to the bottom screw holes. Ensure hands are clean and dry. Moisture will damage the electronics.
3. Turn instrument over and set on a clean, dry surface.
4. Using a Phillips screwdriver, remove the 4 bottom screws.
5. Open instrument carefully. While removing bottom case, ensure sealing gasket does not stick to bottom, but stays in top case groove. If gasket comes out, handle carefully and reinstall in top case groove.  
**Exercise extreme care not to allow any water to enter the open case.**

### II. Installing the New bluDock Circuit Board Module

1. For Ultrameter II Model 4P, skip to step 4.  
Locate the cable connectors and disconnect (unscrew using a 1/4 in. open-end wrench) both cables from the circuit board noting position of RED pH cable. Red cable is on the left. See Figure 1 on reverse side.
2. Remove the bluDock module from its packaging.
3. Move the pH and ORP cables up and over — out of the way of the bluDock installation. See Figure 2 on reverse side.
4. Hold the instrument in your left hand. Hold the bluDock module with the Myron L label facing up in your right hand.
5. Plug the bluDock module into the bluDock connector. See Figure 2 on reverse side. Ensure the module is securely on the connector.
6. For Ultrameter II Model 4P, skip to step 7.  
Reconnect the cables in their respective places: Red cable on the left; Black on the right. Tighten securely. See Figure 3 on reverse side.
7. Thoroughly inspect and clean both top and bottom case (paying special attention to the case seal and O-rings), screw wells and screws.

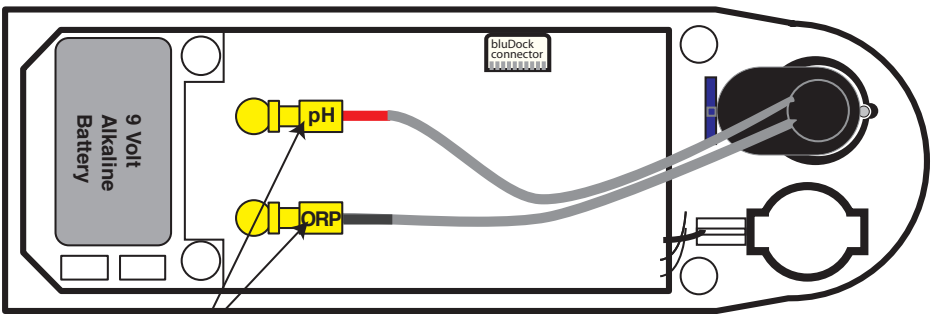
### III. Closing the Instrument Case

1. For Ultrameter II Model 4P, skip to step 2. **Align cables so that they will NOT obstruct or become pinched while reinstalling the bottom case.**
2. Ensure the sealing gasket is installed in the groove of the top case.
3. Replace bottom, aligning it with the groove.
4. Install and start the 4 bottom screws.
5. Tighten screws evenly and securely in a crisscross pattern. See Figure 4 on reverse side. A waterproof seal cannot be ensured unless screws are **secure.** Uneven tightening will cause instrument to rock.
6. For Ultrameter II Model 4P, installation is complete.  
Turn instrument over and fill pH/ORP sensor well with Myron L pH/ORP Sensor Storage Solution. If unavailable, use a pH 4 Buffer or a saturated solution of table salt and tap water.
7. Reinstall protective cap on pH/ORP sensor well.

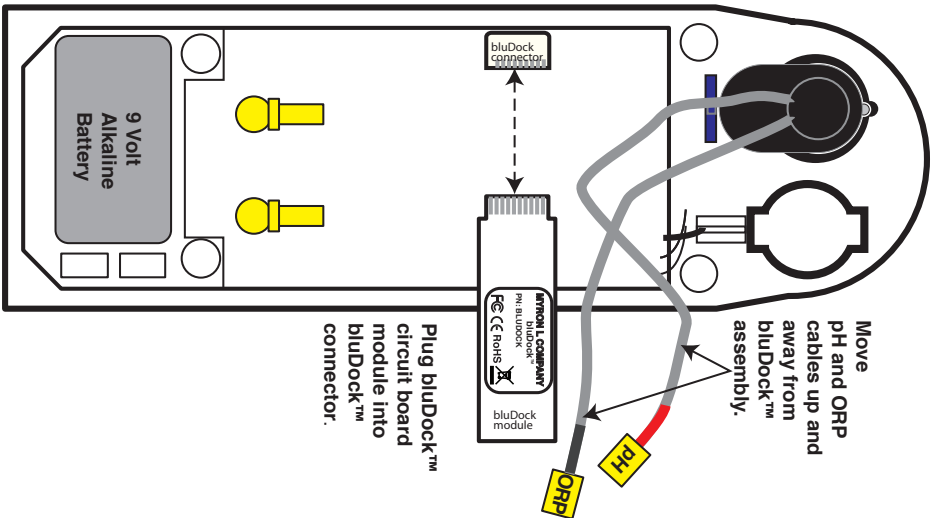
Your instrument is now ready for wireless data transfer. See Instrument and U2CI Manual for further instructions.

# bluDock Installation Illustrations

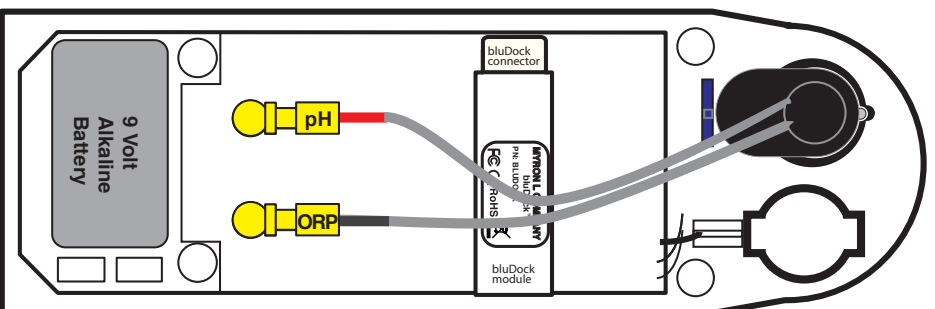
For Ultrameter II™ 6Psi, PoolPro™ and D-6 Digital Dialysate Meter™  
 Ultrameter II Model 4P bluDock module is installed in the same manner in the same location on the circuit board as the 6Psi. However, unscrewing, repositioning and reconnecting of pH/ORP sensor cables is irrelevant.



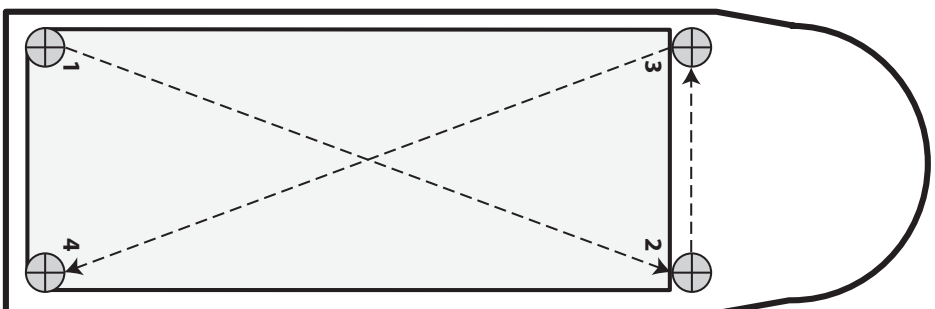
6Psi Ultrameter II Shown  
 Figure 1



6Psi Ultrameter II Shown  
 Figure 2



6Psi Ultrameter II Shown  
 Figure 3



6Psi Ultrameter II Shown  
 Figure 4

2450 Impala Drive  
 Carlsbad, CA 92010-7226 USA  
 Tel: +1-760-438-2021  
 Fax: +1-800-869-7668/+1-760-931-9189  
 www.myronl.com