

Quick Start Installation Guide

U2CI™ bluDock™ enabled Ultrameter II™ Series, POOLPRO™ & Digital Dialysate Meter™† Instrument Interface

VERSION 2.x.x

Order Accessory Package: BLUDOCK

Package Includes:

bluDock™, U2CI Software CD, Operation Manual, Quick Start Installation Guide and dongle for downloading data from your Ultrameter II, POOLPRO or Digital Dialysate Meter

It is highly recommended you save your work and exit applications prior to installation of this software.

Requirements:

Computer running Windows XP™, Windows Vista™ or Windows 7™ or Mac OSX operating systems.

WARNING: USERS THAT HAVE PREVIOUSLY INSTALLED 1.x.x U2CI MUST UNINSTALL IT PRIOR TO INSTALLING U2CI REV 2.x.x. (If you are unsure of how to uninstall and install programs on your machine, contact your IT Department or System Administrator for assistance.)

NOTE: If you have a uDock™, U2CI software versions 2.0.3+ are backward compatible. However, the instrument name feature is inoperable.

Before installing the new U2CI 2.x.x, Windows users must open the “Start” menu, select “Control Panel”, then select “Add or Remove Programs”. Scroll to “U2CI”; select it and click on “Remove”. No System Reboot is required.

Mac OS X users should select “Go” in the Finder menu bar, select “Applications”, and then scroll down to the U2CI folder. Drag the folder to the trash.

bluDock Hardware Setups



- For a computer without Bluetooth® capability:

If you don't have the dongle that came with the BLUDOCK, one can be ordered from the Myron L Company. Order Model # BDDO.

Plug in your dongle and install per manufacturer's instructions.

- For computers with Bluetooth capability/ computers with Bluetooth dongle installed:

First time use of the bluDock:

- Press any parameter button to turn the instrument on.
- Put the instrument in “PC On” mode by pressing the  key until “PC OFF” is displayed.
- Then press the  key.



NOTE: “PC Ini” may momentarily be displayed while initializing.

“PC On” will be displayed.

- Add bluDock to your Bluetooth devices per your operating system procedure.

The bluDock device passkey is 1234.

- After pairing, note the number of the port assigned by the computer.

NOTE: Windows XP will assign outgoing and incoming ports. Note the number of the outgoing port.

NOTE: The instrument will automatically power down after 60 seconds. If the instrument powers down during pairing, repeat step 2.

U2CI Installation for Windows™ Platforms

- U2CI Executable and Support Files Installation.
 - Insert U2CI software CD into CD drive or download the installation package from the Myron L "Download Center": http://myronl.com/main/U2CI_Application_DL.htm
 - If Auto Install does not start, double click on U2CI.msi.
 - Follow installation procedure as prompted. Use the default settings whenever possible.
- Eject the CD and restart your computer.
- Start the U2CI application.

Continued

†WARNING: DIGITAL DIALYSATE METER MEASUREMENT DATA TRANSFERRED TO A PERSONAL COMPUTER USING THE WIRELESS COMMUNICATION OPTION IS FOR RECORD-KEEPING PURPOSES ONLY AND IS NOT INTENDED FOR USE IN MAKING TREATMENT OR DIAGNOSTIC DECISIONS.



4. Open the "Edit" pull-down menu and select "Preferences".
5. On your "Preferences" window, select the port assigned to the bluDock during Bluetooth device pairing.
6. Click "Save".
7. You are now ready to download data from your instrument (see Download Data section).

* The installation location is C:/Program files/U2CI.

U2CI Installation for Macintosh OS X

1. Insert U2CI software CD into CD drive (or download the U2CI software package for Macintosh OS X from the "Download Center":
http://myronl.com/main/U2CI_Application_DL.htm)
2. Double click on the "U2CI" disk icon.
3. Double click on the "U2CI For Mac OS X", and follow the prompts to complete the U2CI application installation.
4. Eject the CD and restart your computer.
5. Put the instrument in "PC On" mode.
6. Start the U2CI application.
7. Open the "Edit" pull-down menu and select "Preferences".
8. On your "Preferences" window, open the "Port" pulldown menu and select the port assigned to the bluDock during Bluetooth device pairing.
9. Click "Save".
10. You are now ready to download data from your instrument (see Download Data section).

Download Data from Your Instrument

1. Click the Download Data button on the U2CI screen on your computer.

2. At this point, you may manipulate data, enter reference information, print, or save as desired.

Save a Data File

There are two ways to save the data you have downloaded from your instrument:

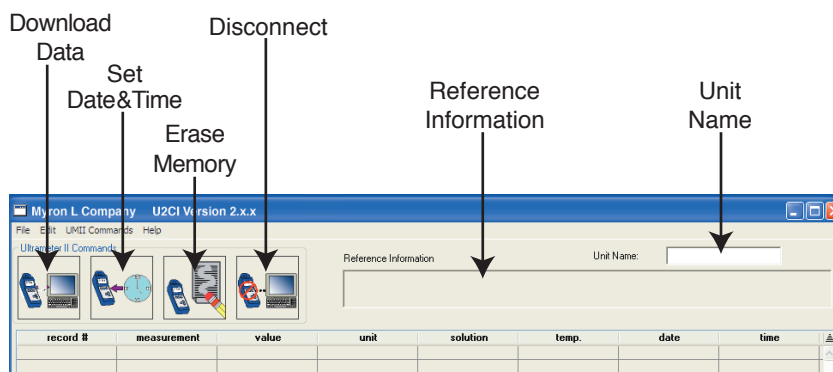
1. MLC data format is used by the Myron L Company's U2CI application software. Saving your data in a .mlc format enables you to load the data file back into the U2CI software at a later date.
 - a. On the "File" menu, click "Save" to save the data in a .mlc format which may be loaded back into the U2CI software at a later date.
2. CSV (comma separated values) data format can be read by many spreadsheet programs, notably Microsoft Excel™ for Macintosh or PC.
 - a. On the "File" menu, click "Save As" to save the data in a .csv format, which may then be easily imported into most spreadsheet applications, such as Microsoft Excel™.

Note: When importing your .csv formatted data into Microsoft Excel™, the reading values will default to a scientific format. To view in "Number" format, you must:

1. Select the cells containing the reading values.
2. Click on the "Format" pull-down menu.
3. Select "cells"
4. Under the "Number" tab, select "Number".
5. Click "OK".

NOTE: For complete instructions and information on application functionality, please see the U2CI Operation Manual.

UMII Commands:
You may use the icon buttons or the "UMII Commands" drop down menu to send commands to your instrument.



2450 Impala Drive
Carlsbad, CA 92010-7226 USA
Tel: +1-760-438-2021
Fax: +1-800-869-7668 / +1-760-931-9189
E-Mail: info@myronl.com
techquestions@myronl.com
www.myronl.com

Built On Trust. Founded in 1957, the Myron L Company is one of the world's leading manufacturers of water quality instruments. Because of our commitment to product improvement, changes in design and specifications are possible. You have our assurance any changes will be guided by our product philosophy: accuracy, reliability, and simplicity.

